

200 SERIES



THE WARMTH OF WOOD
AT AN UNCOMMON VALUE



200 SERIES WINDOWS & PATIO DOORS

A streamlined selection of windows and patio doors, the 200 Series product line delivers Andersen quality at an uncommon value. By focusing on only our most popular sizes and options, it creates just the right balance of design and efficiency. And like all Andersen products, they are supported by over 115 years of commitment to quality and service that can only come from one of the most trusted names in the industry. For more information, visit andersenwindows.com/200series.





Built with the right materials in the right places, 200 Series products offer durability, long-term beauty and options to fit your project needs.

200 SERIES WINDOWS

Tilt-wash double-hung, gliding, picture and half circle windows combine real wood interiors and low-maintenance Perma-Shield® exteriors in standard sizes and options, making these windows a good choice for your new construction or remodeling project.

200 SERIES PATIO DOORS

Perma-Shield and Narroline® gliding patio doors give you the choice of real wood or low-maintenance interiors with narrow profiles to maximize light and view. They are available in standard and custom sizes for your new construction, remodeling or replacement projects. Hinged inswing patio doors offer traditional styling with low-maintenance interiors in standard sizes.



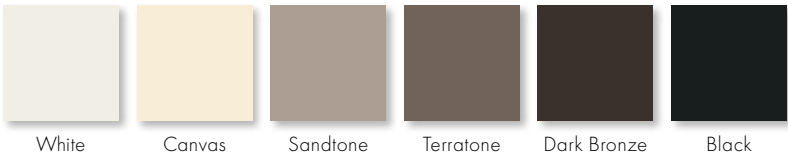
EXTERIOR & INTERIOR OPTIONS

Our Perma-Shield® exterior cladding system offers low maintenance and durability while providing an attractive appearance.

WINDOW EXTERIOR COLORS



PATIO DOOR EXTERIOR COLORS



Hinged inswing patio doors are only available with white, Sandtone or Terratone exteriors.

INTERIOR OPTIONS



Choose unfinished pine or white for windows or Narroline® patio doors. Perma-Shield gliding patio doors interiors match the exterior color selected. Hinged inswing patio doors are only available with a white interior.

Printing limitations prevent exact color duplication. See your Andersen supplier for actual color samples.



GLASS OPTIONS

Glass can affect energy efficiency more than any other part of a window or patio door — and not all glass performs the same. Andersen offers one of the industry’s widest array of glass options, so you’re sure to find the right choice for your climate and your home. Check with your supplier for the selections that meet ENERGY STAR® requirements in your area.

GLASS		ENERGY		LIGHT	
		U-Factor How well a product prevents heat from escaping.	Solar Heat Gain Coefficient How well a product blocks heat caused by sunlight.	Visible Light Transmittance How much visible light comes through a product.	UV Protection How well a product blocks ultraviolet rays.
SmartSun™	Thermal control similar to tinted glass, with visible light transmittance similar to Low-E glass.	● ● ● ○	● ● ● ●	● ● ● ○	● ● ● ●
SmartSun with HeatLock® Coating	Applied to the room-side surface, it reflects heat back into the home and improves U-Factors.	● ● ● ●	● ● ● ●	● ● ○ ○	● ● ● ●
Low-E®	Outstanding overall performance for climates where both heating and cooling costs are a concern.	● ● ● ○	● ● ● ○	● ● ● ○	● ● ● ○
Low-E with HeatLock Coating	Applied to the room-side surface, it reflects heat back into the home and improves U-Factors.	● ● ● ●	● ● ● ○	● ● ● ○	● ● ● ○
Sun*	Outstanding thermal control in southern climates where less solar heat gain is desired.	● ● ● ○	● ● ● ●	● ○ ○ ○	● ● ● ○
PassiveSun®	Ideal for northern, passive solar construction applications where solar heat gain is desired.	● ● ● ○	● ○ ○ ○	● ● ● ○	● ● ● ○
PassiveSun with HeatLock Coating	Applied to the room-side surface, it reflects heat back into the home and improves U-Factors.	● ● ● ○	● ○ ○ ○	● ● ● ○	● ● ● ○
Clear Dual-Pane	High visibility with basic thermal performance.	● ○ ○ ○	○ ○ ○ ○	● ● ● ●	○ ○ ○ ○

Center of glass performance only. Ratings based on glass options as of March 2019. Visit andersenwindows.com/energystar for ENERGY STAR® map and NFRC total unit performance data.
* Sun glass available on 200 Series patio doors only.

ADDITIONAL GLASS OPTIONS

Tempered safety glass, standard on patio doors.
Obscure patterned glass to let in light while obscuring vision.



Blinds-Between-the-Glass are located between the panes of insulated glass, protected from dust and damage and never need cleaning. White blinds are available on select Perma-Shield® gliding patio doors.



WINDOW HARDWARE

Tilt-Wash Double-Hung

STANDARD

Lock & Keeper

Standard: Stone | **White**
Optional:** Antique Brass | Black
Bright Brass | Gold Dust
Oil Rubbed Bronze | Satin Nickel

CLASSIC SERIES™

Optional Lift**

Stone | **White**

Stone finish is standard for pine interiors. White finish is standard for white interiors.

Gliding

STANDARD

Lock & Keeper

CLASSIC SERIES

Pull

Stone | **White**

Stone finish is standard for pine interiors. White finish is standard for white interiors. Additional lock and keeper finishes are available, contact your Andersen supplier.

Bold names denote finish shown

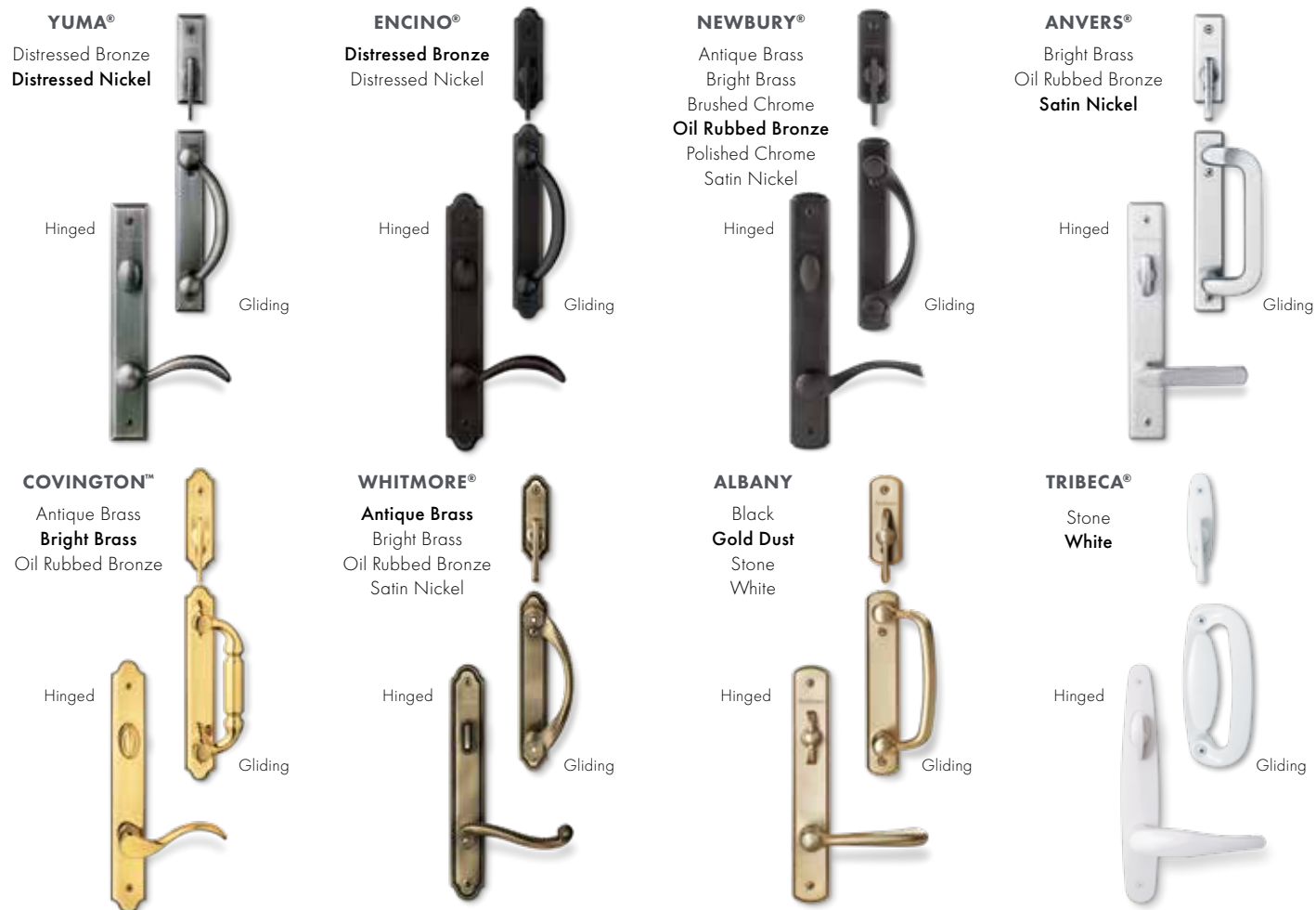
VeriLock® security sensors and wireless open/closed sensors are available with select products. Visit andersenwindows.com/connect to learn more.

**Hardware is sold separately.
Printing limitations prevent exact finish replication. See your Andersen supplier for actual finish samples.

5

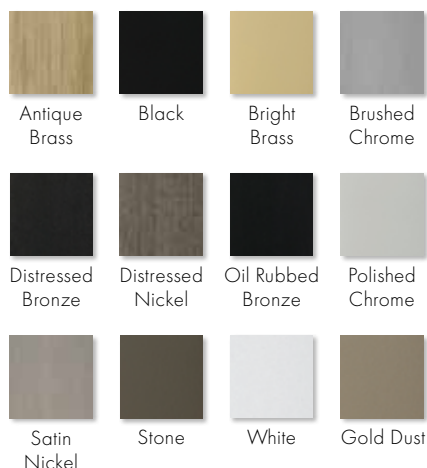
PATIO DOOR HARDWARE

Andersen® patio door hardware* is available in a variety of designs to match virtually any style. Additional hardware options such as exterior keyed locks and matching hinge finishes are also available.



Bold name denotes finish shown.

HARDWARE FINISHES



FSB® HARDWARE

Durable, stainless steel FSB hinged door hardware features clean lines and a sleek satin finish for a thoroughly modern look.



*Hardware sold separately.

Distressed bronze and oil rubbed bronze are "living" finishes that will change with time and use. Bright brass and satin nickel finishes on patio door hardware feature a 10-year limited warranty.

Matching hinges available in most finishes for inswing patio doors.

Printing limitations prevent exact finish replication. See your Andersen supplier for actual finish samples.

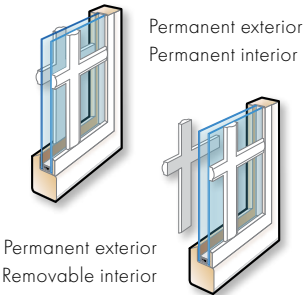
"FSB" is a registered trademark of Franz Schneider Brakel GmbH & Co.

GRILLE OPTIONS

Grilles are available in a variety of widths, configurations and patterns to fit any architectural style or project need.

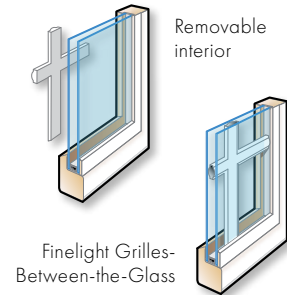
SIMULATED DIVIDED LIGHT

Permanent grilles on the exterior and interior with no spacer between the glass. We also offer permanent exterior grilles with removable interior grilles in natural wood or prefinished white.

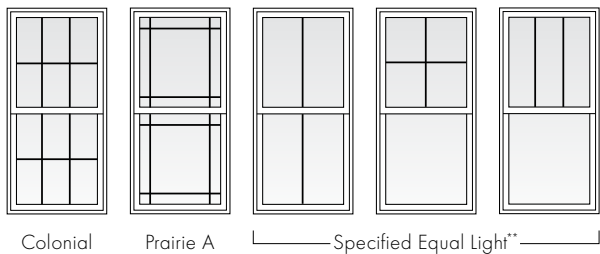


CONVENIENT CLEANING OPTIONS

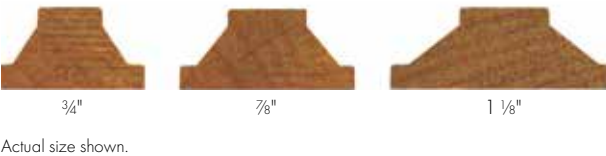
Removable interior grilles come off for easy cleaning. Finelight™ grilles-between-the-glass* are installed between the glass panes and feature a contoured profile in 1" and 3/4" widths.



Grille Patterns



Grille Bar Widths



*7/8" and 1 1/8" not available in Finelight grilles-between-the-glass.
**Specify number of same-size rectangles across or down.
Additional grille patterns available for patio doors.

INSECT SCREEN OPTIONS

Exclusive TruScene® insect screens provide more than 50% greater clarity than our conventional screens and are available on tilt-wash double-hung and gliding windows. Conventional insect screens are also available and standard on gliding and hinged patio doors.





THE ENVIRONMENT HAS A BUSINESS PARTNER

Respect for the environment is nothing new at Andersen. For more than a century, it's been part of who we are. Our commitment to recycle and reclaim materials began simply because it was good business. Now it's part of our broader commitment to sustainability and responsible stewardship of all our resources. Andersen is committed to providing you with long-lasting,* energy-efficient windows and doors. Visit andersenwindows.com/sustainability for more information.



Andersen makes windows and doors with options that make them ENERGY STAR® v. 6.0 certified throughout the U.S.



Andersen is a charter member of the **U.S. Green Building Council** and a strong supporter of its LEED® (Leadership in Energy and Environmental Design) National Green Building Standard rating system.



*Visit andersenwindows.com/warranty for details.

All trademarks where denoted are marks of their respective owners.
©2020 Andersen Corporation. All rights reserved. 02/20 Part #110006