



**Boise Cascade®**  
ENGINEERED WOOD PRODUCTS

## Deep Depth Boise Cascade® AJS® Joists



### Deep AJS® Joists Can Make A Difference in Your Next Multi-Family or Light Commercial Project

**Apartments | Condominiums | Townhouses | Student Housing  
Hotels | Government Housing | Assisted Living Facilities**

Boise Cascade's deep depth joists provide the long spans and load-carrying capacity builders need for multi-family and light commercial structures. But those aren't the only benefits you'll see when you specify AJS® joists in your next project.

#### **FASTER:**

- ▶ Ready-to-ship inventory means reduced lead times and fast delivery\*.
- ▶ Design and create layouts quickly with our BC Framers®, BC FastPlan®, BC Estimator® and BC Calc® software.

#### **STRONGER:**

- ▶ Deep depth AJS® joists can handle longer clear spans and heavier loads.
- ▶ AJS® joists 18" and deeper have a thicker web for increased shear performance.
- ▶ Enhance overall performance by integrating joists with Boise Cascade® Versa-Lam® LVL beams, Versa-Stud® LVL walls and Boise Cascade® Rimboard.

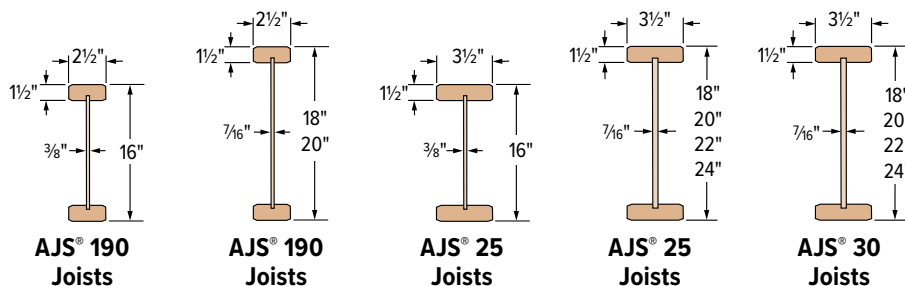
#### **EASIER:**

- ▶ Allowable holes permit larger ductwork than similar-depth open web trusses.
- ▶ Achieve a one-hour fire-resistive assembly with a single layer 5/8" gypsum board ceiling with resilient channels, 1x4 furring strip, and mineral fiber insulation (see APA PR-S201 FR4 for details).
- ▶ "Cut unit" service available from Boise Cascade EWP mills for commercial projects.

#### **AJS® JOIST BENEFITS**

- ▶ Allows large holes for HVAC systems
- ▶ Field-trimmable, no special skills or tools needed
- ▶ Pre-stamped knockout holes
- ▶ Stocked sizes mean reduced lead times and fast delivery
- ▶ Easily integrates with Boise Cascade® Rimboard and Versa-Lam® LVL products
- ▶ Lifetime warranty

Deep depth AJS® joists are offered in the following series and sizes\*:



\* Lead times and available sizes may vary by region.



# Deep Depth Boise Cascade® AJS® Joists

## AJS® Joist Floor Span Table

Based on Multi-Family Dwellings and Hotels: Private Rooms

Joist Depth	Joist Series	40 PSF Live Load, 25 PSF Dead Load							
		L/480 Live Load Deflection				L/600 Live Load Deflection			
		12" o.c.	16" o.c.	19.2" o.c.	24" o.c.	12" o.c.	16" o.c.	19.2" o.c.	24" o.c.
16"	AJS® 190	28'-10"	22'-7"	18'-10"	15'-0"	26'-8"	22'-7"	18'-10"	15'-0"
	AJS® 25	31'-4"	24'-0"	20'-0"	16'-0"	28'-11"	24'-0"	20'-0"	16'-0"
18"	AJS® 190	31'-4"	27'-1"	24'-9"	22'-1"	29'-5"	26'-11"	24'-9"	22'-1"
	AJS® 25	34'-5"	31'-5"	28'-11"	25'-10"	31'-10"	29'-0"	27'-5"	25'-6"
	AJS® 30	35'-6"	32'-4"	30'-6"	28'-4"	32'-10"	29'-10"	28'-2"	26'-2"
20"	AJS® 190	33'-1"	28'-8"	26'-2"	23'-4"	31'-11"	28'-8"	26'-2"	23'-4"
	AJS® 25	37'-3"	33'-6"	30'-7"	27'-4"	34'-6"	31'-5"	29'-8"	27'-4"
	AJS® 30	38'-5"	35'-0"	33'-0"	30'-8"	35'-6"	32'-4"	30'-6"	28'-4"
22"	AJS® 25	40'-0"	35'-1"	32'-0"	28'-7"	37'-1"	33'-9"	31'-10"	28'-7"
	AJS® 30	40'-0"	37'-8"	35'-6"	32'-0"	38'-3"	34'-10"	32'-10"	30'-7"
24"	AJS® 25	40'-0"	36'-7"	33'-4"	29'-10"	39'-7"	36'-1"	33'-4"	29'-10"
	AJS® 30	40'-0"	40'-0"	37'-7"	32'-9"	40'-0"	37'-3"	35'-2"	32'-9"

### TABLE NOTES\*

- ▶ Table values are based on:
  - 40 psf live load for floors of multi-family dwellings and hotel private rooms per Table 1607.1 of the IBC®.
  - the most restrictive of simple or multiple span applications.
  - minimum 2" end bearing and 3½" intermediate bearing lengths.
- ▶ Table values are the maximum allowable clear distance between supports and assume 2¾/32" minimum plywood/OSB-rated sheathing is glued and nailed to joists.
- ▶ Spans are limited by allowable moment and reaction values, total load deflection of L/240. Live load deflection limits are as shown, in addition to a maximum actual live load deflection of 1".
- ▶ It may be possible to exceed the limitations of this table by using BC Calc® sizing software.

### WEB STIFFENER REQUIREMENTS

Web stiffeners are required at all bearing locations for joist depths of 18" and deeper.

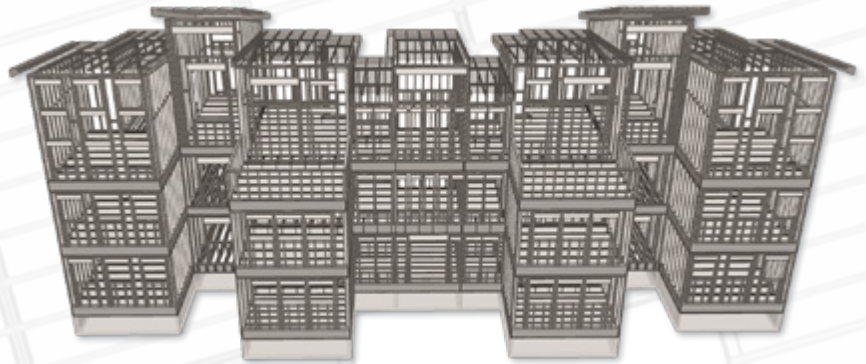
\* For complete specification and installation information regarding AllJoist® AJS® joists, refer to Boise Cascade's AllJoist® Commercial Guide. Lead times and available sizes may vary by region.

With defect-free products and unsurpassed customer service, Boise Cascade helps you build structures

**Faster.**

**Stronger.**

**Easier.**



The Boise Cascade EWP sales and distribution teams are here to help with your next multi-family or light commercial project. For more information go to [bc.com/ewp](https://bc.com/ewp) or call our support center at **800-232-0788**.



**Boise Cascade®**  
ENGINEERED WOOD PRODUCTS