



Boise Cascade®
ENGINEERED WOOD PRODUCTS

Deep Depth Boise Cascade® BCI® Joists



Deep BCI® Joists Can Make A Difference in Your Next Multi-Family or Light Commercial Project

**Apartments | Condominiums | Townhouses | Student Housing
Hotels | Government Housing | Assisted Living Facilities**

Boise Cascade's deep depth joists provide the long spans and load-carrying capacity builders need for multi-family and light commercial structures. But those aren't the only benefits you'll see when you specify BCI® joists in your next project.

FASTER:

- ▶ Ready-to-ship inventory means reduced lead times and fast delivery*.
- ▶ Design and create layouts quickly with our BC Framers®, BC FastPlan®, BC Estimator® and BC Calc® software.

STRONGER:

- ▶ Deep depth BCI® joists can handle longer clear spans and heavier loads.
- ▶ Enhance overall performance by integrating joists with Boise Cascade® Versa-Lam® LVL beams, Versa-Stud® LVL walls and Boise Cascade® Rimboard.

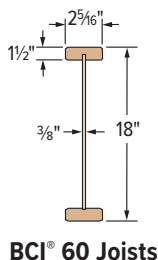
EASIER:

- ▶ Allowable holes permit larger ductwork than similar-depth open web trusses.
- ▶ Achieve a one-hour fire-resistive assembly using BCI® 60 or BCI® 90 joists with a single layer 5/8" gypsum board ceiling with resilient channels, 1x4 furring strip, and mineral fiber insulation (see APA PR-S201 FR4 for details).
- ▶ "Partial unit" service available from Boise Cascade EWP mills for commercial projects.

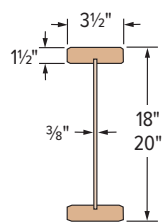
BCI® JOIST BENEFITS

- ▶ Allows large holes for HVAC systems
- ▶ Field-trimmable, no special skills or tools needed
- ▶ Pre-stamped knockout holes
- ▶ Stocked sizes mean reduced lead times and fast delivery
- ▶ Easily integrates with Boise Cascade® Rimboard and Versa-Lam® LVL products
- ▶ Lifetime warranty

Deep depth BCI® joists are offered in the following series and sizes*:



BCI® 60 Joists



BCI® 90 Joists



* Lead times and available sizes may vary by region.

bc.com/ewp | 800.232.0788

Deep Depth Boise Cascade® BCI® Joists

BCI® Joist Floor Span Table

Based on Multi-Family Dwellings and Hotels: Private Rooms

Joist Depth	Joist Series	40 PSF Live Load, 25 PSF Dead Load							
		L/480 Live Load Deflection				L/600 Live Load Deflection			
		12" o.c.	16" o.c.	19.2" o.c.	24" o.c.	12" o.c.	16" o.c.	19.2" o.c.	24" o.c.
18"	BCI® 60	31'-11"	29'-2"	27'-0"	24'-2"	29'-6"	26'-11"	25'-5"	23'-7"
	BCI® 90	35'-11"	32'-8"	30'-9"	25'-4"	33'-2"	30'-2"	28'-5"	25'-4"
20"	BCI® 90	38'-10"	35'-4"	32'-11"	26'-4"	35'-11"	32'-7"	30'-9"	26'-4"

WEB STIFFENER REQUIREMENTS

Web stiffeners are required at all bearing locations for joist depths of 18" and deeper.

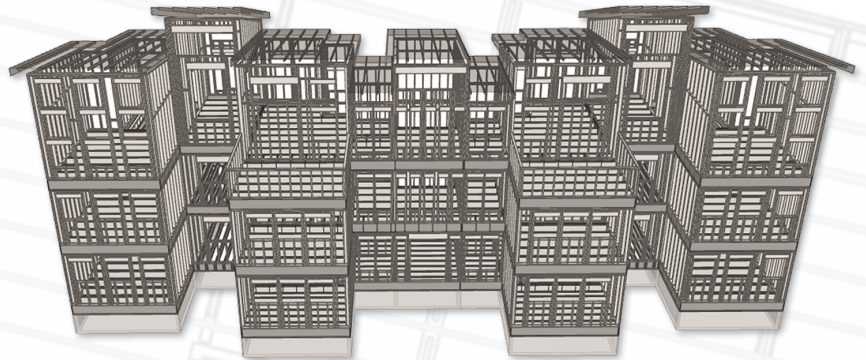
* For complete specification and installation information regarding BCI® joists, refer to Boise Cascade Specifier's Guides. Lead times and available sizes may vary by region.

TABLE NOTES*

- ▶ Table values are based on:
 - 40 psf live load for floors of multi-family dwellings and hotel private rooms per Table 1607.1 of the IBC®.
 - the most restrictive of simple or multiple span applications.
 - minimum 2" end bearing and 3½" intermediate bearing lengths.
- ▶ Table values are the maximum allowable clear distance between supports and assume 23/32" minimum plywood/OSB-rated sheathing is glued and nailed to joists.
- ▶ Spans are limited by allowable moment and reaction values, total load deflection of L/240. Live load deflection limits are as shown, in addition to a maximum actual live load deflection of 1".
- ▶ It may be possible to exceed the limitations of this table by using BC Calc® sizing software.

With defect-free products and unsurpassed customer service, Boise Cascade helps you build structures

Faster.
Stronger.
Easier.



The Boise Cascade EWP sales and distribution teams are here to help with your next multi-family or light commercial project. For more information go to bc.com/ewp or call our support center at **800-232-0788**.



Boise Cascade®
ENGINEERED WOOD PRODUCTS