



METRIE®



INTERIOR MOULDING & TRIM

Atlanta-Charlotte



WE ARE METRIE

For nearly a century, we've honed our love of beautiful millwork to deliver solutions beyond measure. Our focus on high-quality products and dedication to providing personalized support have helped us grow from a small, family-owned business into the largest supplier and manufacturer of solid wood and composite moulding in North America.

EXCEPTIONAL EXPERIENCES, EVERY DAY

We're more than a millwork company. We're a trusted partner serving those in the pursuit of a remarkable home.

Metrie creates high-quality, finely crafted architectural elements that help people transform houses into homes. Because we understand that when you're home, you're whole.

[METRIE.COM](https://www.metrie.com)

EXTENSIVE REACH WITH A LOCAL FEEL

Metrie has the broad reach and supply chain expertise of an industry leader with the personal touch of a family business.

We operate six domestic manufacturing facilities between the U.S. and Canada, and we are the largest manufacturer of MDF moulding in North America.

TAILORED SOLUTIONS

We listen to our customers to interpret trends and solve pain points so we can make it easier for them to succeed.

Our mills allow us the flexibility to provide the right solutions to the markets we serve, understanding regional differences and adhering to strict specification standards.

the
finished
space

Get inspired today with
the Finished Space at
[thefinishedspace.com](https://www.thefinishedspace.com)

TABLE OF CONTENTS

- 6 ARCHITRAVE
- 7 BACK BAND
- 8 BASEBOARD
- 16 BASE CAP
- 17 BASE SHOE
- 18 CASING
- 32 CHAIR RAIL
- 35 CROWN
- 45 STOP
- 47 FLATSTOCK
- 48 JAMB
- 49 PANEL MOULD
- 52 STOOL
- 54 MISCELLANEOUS



STORAGE, HANDLING, AND PREPARATION OF ALL MOULDINGS AND S4S BOARDS

Prior to installation, it is important to acclimate your moulding and trim products by storing them in the installation space for at least 3 days. Wood and wood based products can expand and contract depending on internal and external environmental moisture levels. For best results, be sure to store products in a dry location and transport only if fully protected from water. Keep products clean from dirt and debris and finish according to paint and stain manufacturers' recommendations.

- 1 ARCHITRAVES:** In classical architecture, it described the main beam resting on the tops of the columns. Today it is often used as a decorative moulding for ornamentation or finishing at the top of windows and doors.
- 2 BASEBOARDS:** Baseboards are placed along the wall at the floor. They should be chosen to work in harmony with your casings to finish and tie the room together. Baseboards are usually thinner than the casing.
- 3 BUILD-UPS:** Combining two or more moulding profiles to create a new or custom look. Also called "stacking", Build-Ups make it easy to create the look of custom made trimwork without the high cost.
- 4 CASINGS:** Casings define the overall character of a room and are often the most visible part of the trim. They are used primarily to cover the gap between drywall and the door or window frame. Casings are generally thicker than the base mouldings.
- 5 CROWNS:** Crowns are placed along the wall at the ceiling. They come in a wide range of patterns and sizes. Crowns soften the transition from wall to ceiling while adding a distinctive look and charm to your room.
- 6 FINISH BOARDS:** Finish Boards come in either S4S (Surfaced 4 Sides) or S3S (Surfaced 3 Sides) and are used for a multitude of purposes including shelving, window liner, bases, casing, etc.
- 7 PANEL MOULDS:** Panel Moulds are used to frame wall paneling and add an accent to your walls. Often used in furniture construction.
- 8 RAKE MOULDS:** Rakes are often used as crowns. In fact, they are sometimes called "solid crowns".
- 9 WAINSCOT:** Wainscot is trimwork installed in the area below a chair rail. Numerous options are available including raised panel, shadow box and beaded. Combined with a chair rail and baseboard, wainscoting creates a dramatic look to any room.
- 10 WINDOW STOOLS:** Also called "window sill", a Window Stool is the surface installed below the sash of a window. Trim installed under window stool creates a distinctive look and adds a decorative touch.

ARCHITRAVE

An architrave is a form of trim used to accent the top of a doorway, window or opening. It may also be referred to as a header or pediment. High above windows and doors, architraves work to add grandeur to any space – reducing miter lines and elevating your look. A great architrave is, above all else, the dressing that’s built to impress.



STOCK CODE
1677969

DIMENSIONS
1-1/2" x 5-1/2" x 16'
MDF/UL



STOCK CODE
A 5030M
(1382895)

DIMENSIONS
1-3/16" x 6-1/4" x 16'
MDF/UL

BACK BAND

A backband is used in conjunction with a casing to create a thicker, more decorative look.



STOCK CODE
A 1686891

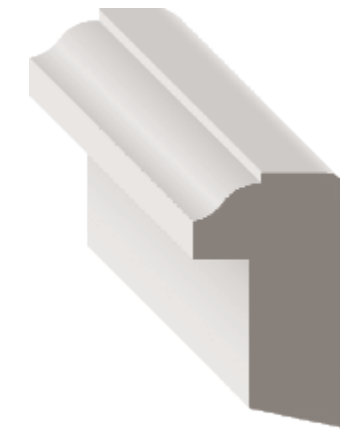
DIMENSIONS
1 1/16" x 1-1/16" x 17'
PFJ

C 1674183

1 1/16" x 1-1/16" x 17'
FJR

280
(1382696)

1 1/16" x 1-1/16" x RL (8-16')
PIN

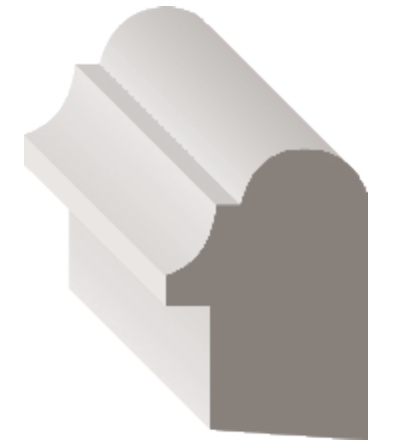


STOCK CODE
C 1684003

DIMENSIONS
1 1/16" x 1-1/16" x 16'
PFJ

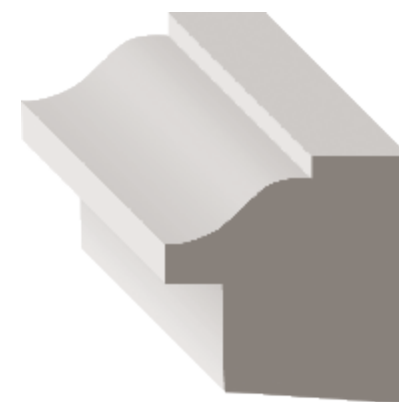
281
(1394402)

1 1/16" x 1-1/16" x RL (8-16')
PIN



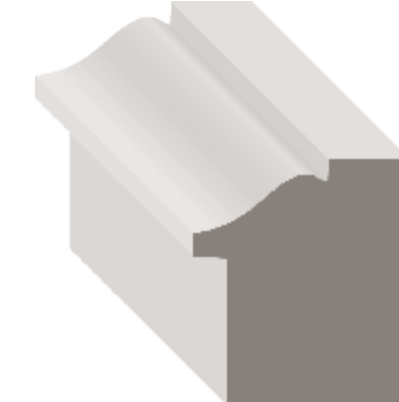
STOCK CODE
A 284P
(1394407)

DIMENSIONS
1-1/8" x 1-5/8" x 17'
PFJ



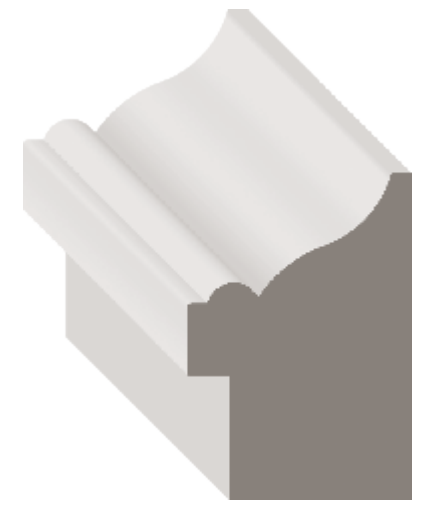
STOCK CODE
A 1674680

DIMENSIONS
1-5/16" x 1-5/16" x 17'
PFJ



STOCK CODE
282FJ
(1394406)

DIMENSIONS
1-5/8" x 1-3/8" x 17'
FJR



STOCK CODE
A 200P
(1394361)

DIMENSIONS
1-3/8" x 2" x 17'
PFJ

BASEBOARD

Great baseboards create a smooth transition from the floor to the wall, guiding you seamlessly from room to room. They work in harmony with your door and window casings, and should be slightly thinner than your casing for a proper installation.



STOCK CODE
623MD
(1566985)

DIMENSIONS
1/2" x 3-1/4" x 16'

MDF/UL



STOCK CODE
623P
(1382947)

DIMENSIONS
9/16" x 3-1/4" x 16'

PFJ

623FJ
(1382944)

9/16" x 3-1/4" x 16'

FJR

A 623
(1382942)

9/16" x 3-1/4" x RL (8-16')

PIN



STOCK CODE
620FJ
(1567253)

DIMENSIONS
9/16" x 4-1/4" x 16'

FJR

620P
(1394610)

9/16" x 4-1/4" x 16'

PFJ

620M
(1382937)

1/2" x 4-1/4" x 16'

MDF/UL



A **STOCK CODE**
618FJ
(1567252)

DIMENSIONS
9/16" x 5-1/4" x 16'

FJR

618P
(1382933)

9/16" x 5-1/4" x 16'

PFJ

618M
(1382932)

1/2" x 5-1/4" x 16'

MDF/UL



STOCK CODE
163ESFJ
(1382550)

DIMENSIONS
9/16" x 5-1/4" x 16'

FJR

163ESP
(1382551)

9/16" x 5-1/4" x 16'

163E7SP
(1394284)

9/16" x 7-1/4" x 16'

A 163EP
(1382548)

1 1/16" x 5-1/4" x 16'

PFJ

163EMD
(1394288)

9/16" x 5-1/4" x 16'

163E7MD
(1394281)

9/16" x 7-1/4" x 16'

163E9M
(1394285)

9/16" x 9-1/4" x 16'

A 18MM163E
(1394336)

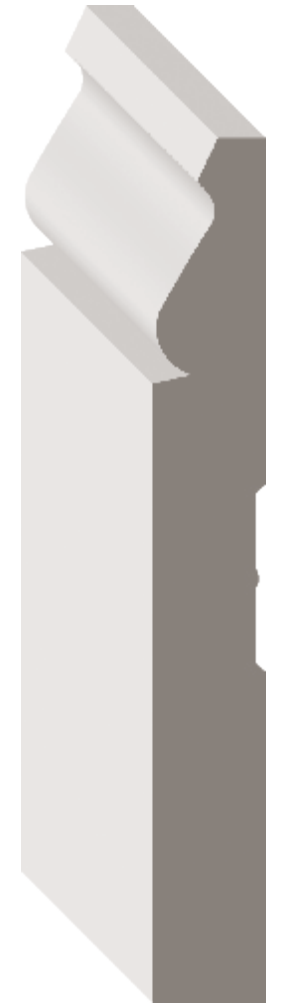
1 1/16" x 5-1/4" x 16'

MDF/UL

A 163E
(1461928)

1 1/16" x 5-1/4" x RL (8-16')

PIN



A **STOCK CODE**
18MM163E7
(1394337)

DIMENSIONS
1 1/16" x 7-1/4" x 16'

MDF/UL

163E7P
(1382542)

1 1/16" x 7-1/4" x 16'

PFJ



STOCK CODE
163EMSD
(1394289)
163E7MS
(1394282)

DIMENSIONS
1/2" x 5-1/4" x 16'

DIMENSIONS
1/2" x 7-1/4" x 16'

MDF/UL



STOCK CODE
A 1382988
A 1681669

DIMENSIONS
1/2" x 5-1/4" x 16'
1/2" x 7-1/4" x 16'

MDF/UL



STOCK CODE
C 1382989

DIMENSIONS
9/16" x 5-1/4" x 16'

PFJ



STOCK CODE
A 1677449

DIMENSIONS
1/2" x 5" x 16'

MDF/UL



STOCK CODE
A 1626223

DIMENSIONS
1/2" x 6" x 16'

MDF/UL



STOCK CODE
713P
(1382973)

DIMENSIONS
9/16" x 3-1/4" x 16'

PFJ

A 713
(1382972)

9/16" x 3-1/4" x RL (8-16')

PIN



STOCK CODE 1692574
DIMENSIONS $\frac{9}{16}$ " x 4- $\frac{1}{4}$ " x 16'
PFJ



STOCK CODE 1692576
DIMENSIONS $\frac{9}{16}$ " x 5- $\frac{1}{4}$ " x 16'
PFJ



STOCK CODE CVS1B2PMD16
(1323956)
1674704
DIMENSIONS $\frac{9}{16}$ " x 5- $\frac{1}{2}$ " x 16'
 $\frac{19}{32}$ " x 7- $\frac{1}{4}$ " x 16'
MDF/UL

1676052
DIMENSIONS $\frac{19}{32}$ " x 5- $\frac{1}{2}$ " x 16'
PFJ



STOCK CODE 1692569
DIMENSIONS $\frac{9}{16}$ " x 7- $\frac{1}{4}$ " x 16'
PFJ



STOCK CODE  1680231
DIMENSIONS $\frac{9}{16}$ " x 5- $\frac{1}{2}$ " x 16'
PFJ



STOCK CODE 1680232
DIMENSIONS $\frac{9}{16}$ " x 7- $\frac{1}{4}$ " x 16'
PFJ



STOCK CODE
A 1521912

DIMENSIONS
1/2" x 4-1/4" x 16'
MDF/UL



STOCK CODE
1462168

DIMENSIONS
9/16" x 4-1/4" x 16'
PFJ



STOCK CODE
C 1382822

DIMENSIONS
9/16" x 3-1/2" x 16'
PFJ



STOCK CODE
C 3120BM
(1405121)

DIMENSIONS
9/16" x 3-1/2" x 16'
MDF/UL



STOCK CODE
C 1393458

DIMENSIONS
9/16" x 5-1/2" x 16'
PFJ

STOCK CODE
C 3850BMD
(1405168)

DIMENSIONS
9/16" x 5-1/2" x 16'
MDF/UL

BASE CAP

Baseboard caps are traditionally installed on top of an eased or square edge baseboard to add height and a decorative element.



STOCK CODE
163FJ
(1382553)

DIMENSIONS
1 1/16" x 1-3/8" x 16'

FJR

163P
(1394296)

1 1/16" x 1-3/8" x 16'

PFJ

163
(1394276)

1 1/16" x 1-3/8" x RL (8-16')

PIN



STOCK CODE
172
(1394325)

DIMENSIONS
5/8" x 3/4" x RL (8-16')

PIN



STOCK CODE
167P
(1382569)

DIMENSIONS
1 1/16" x 1-1/8" x 16'

PFJ



STOCK CODE
166
(1382563)

DIMENSIONS
5/8" x 1-1/4" x RL (6-16')

PIN



STOCK CODE
BC150FJP
(1394672)

DIMENSIONS
2 1/32" x 1-13/32" x 16'

PFJ

BASE SHOE

Base shoes are versatile profiles that work to solve numerous moulding and trim needs. Base shoes are primarily used to trim flooring materials and are often used in combination with a traditional baseboard to conceal variations between the flooring and the base.



STOCK CODE
126P
(1682127)

DIMENSIONS
1/2" x 3/4" x 16'

LVL

1521266

1/2" x 3/4" x 16'

PFJ

1260
(1394234)

1/2" x 3/4" x RL (8-16')

O

126
(1461861)

1/2" x 3/4" x RL (8-16')

PIN



STOCK CODE
1270
(1394236)

DIMENSIONS
3/8" x 3/4" x RL (1-16')

O



STOCK CODE
129P
(1676530)

DIMENSIONS
7/16" x 1 1/16" x 16'

LVL

1382479

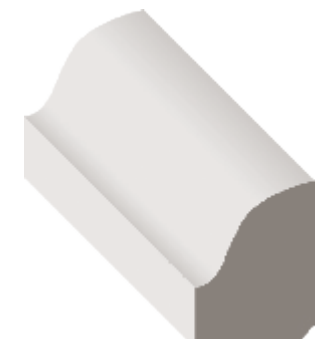
7/16" x 1 1/16" x 16'

PFJ

129
(1394238)

7/16" x 1 1/16" x RL (8-16')

PIN



STOCK CODE
1694178

DIMENSIONS
1/2" x 3/4" x 16'

PFJ

131
(1472771)

1/2" x 3/4" x RL (8-16')

PIN

CASING

Casing is used generously in spaces and is often the most visible moulding in a room. Casings are primarily used to go around a door or window, covering the gap between drywall and the door or window frame. Casings are generally thicker than base mouldings, they bring a room together: left to right, top to bottom. And like any framing element, the options are endless, from build-ups of multiple pieces to full wraps. With casings, there is no wrong way, only your way.



STOCK CODE
A 387P (1394478)
DIMENSIONS
 5/8" x 2-1/4" x 16'
PFJ

A 387 (1394477)
 5/8" x 2-1/4" x RL (8-16')
PIN



STOCK CODE
A 324FJ185 (1394425)
DIMENSIONS
 1 1/16" x 2-1/4" x 85"
FJR

A 324PI85 (1637309)
 1 1/16" x 2-1/4" x 85"
A 324P (1394427)
 1 1/16" x 2-1/4" x 16'
PFJ

A 324I85 (1394426)
 1 1/16" x 2-1/4" x 85"
A 324 (1521753)
 1 1/16" x 2-1/4" x RL (7-16')
PIN



STOCK CODE
A 327PI85 (1382728)
DIMENSIONS
 1 1/16" x 2-1/4" x 85"
A 327P (1382725)
 1 1/16" x 2-1/4" x 14'
PFJ

A 327 (1382723)
 1 1/16" x 2-1/4" x RL (7-16')
PIN



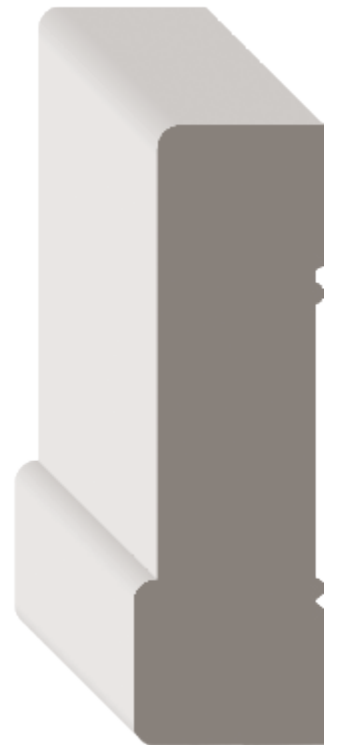
STOCK CODE
A 366M (1394461)
DIMENSIONS
 9/16" x 2-1/4" x 14'
MDF/UL

A 366PI85 (1394463)
 1 1/16" x 2-1/4" x 85"
A 366P (1416106)
 1 1/16" x 2-1/4" x 17'
PFJ

A 366 (1382766)
 1 1/16" x 2-1/4" x RL (7-16')
PIN



STOCK CODE
C 442P (1394507)
DIMENSIONS
 1 1/16" x 2-1/4" x 14'
PFJ



STOCK CODE
C 1484991
DIMENSIONS
 1" x 3-1/4" x 16'
MDF/UL



STOCK CODE
1692575

DIMENSIONS
1¹/₁₆" x 2⁻³/₄" x 17'

PFJ



STOCK CODE
1692577

DIMENSIONS
1¹/₁₆" x 3⁻¹/₄" x 17'

PFJ



STOCK CODE
1693027
1382857

DIMENSIONS
1¹/₁₆" x 2⁻¹/₂" x 83⁻³/₄"
1¹/₁₆" x 2⁻¹/₂" x 16'

PFJ



STOCK CODE
A 1694007

DIMENSIONS
5/8" x 3⁻¹/₂" x 16'

MDF/UL



STOCK CODE
C 1693026
1382811

DIMENSIONS
1¹/₁₆" x 3⁻¹/₂" x 84⁻¹³/₁₆"
1¹/₁₆" x 3⁻¹/₂" x 16'

PFJ



STOCK CODE
C 1693396
356PI85
(1382748)

DIMENSIONS
5/8" x 2⁻¹/₄" x 83⁻¹/₂"
5/8" x 2⁻¹/₄" x 85"

PFJ

356P
(1416093) 5/8" x 2⁻¹/₄" x 17'

PFJ

356FJI85
(1382743) 5/8" x 2⁻¹/₄" x 85"

356FJ
(1638047) 5/8" x 2⁻¹/₄" x 17'

FJR

A 1690426
356MD
(1394451) 5/8" x 2⁻¹/₄" x 85"
5/8" x 2⁻¹/₄" x 14'

MDF/UL

A 356I85
(1394450) 2¹/₃₂" x 2⁻¹/₄" x 85"

356
(1462115) 2¹/₃₂" x 2⁻¹/₄" x RL [7-16']

PIN



STOCK CODE
444LFJ187
(1394511)
444LFJF17
(1394510)

DIMENSIONS
 $1\frac{1}{16}'' \times 3\text{-}\frac{1}{4}'' \times 87''$
 $1\frac{1}{16}'' \times 3\text{-}\frac{1}{4}'' \times 17'$

FJR



STOCK CODE
A 504LPF17
(1394566)

DIMENSIONS
 $1\frac{1}{16}'' \times 2\text{-}\frac{3}{16}'' \times 17'$

PFJ



STOCK CODE
A 1695722

DIMENSIONS
 $1\text{-}\frac{1}{16}'' \times 2\text{-}\frac{3}{4}'' \times 17'$

PFJ



STOCK CODE
A 1696703

DIMENSIONS
 $1\text{-}\frac{1}{32}'' \times 2\text{-}\frac{23}{32}'' \times 17'$

PFJ



STOCK CODE
A 401LP187
(1394492)
A 401LP
(1394491)

DIMENSIONS
 $1\frac{1}{16}'' \times 2\text{-}\frac{3}{4}'' \times 87''$
 $1\frac{1}{16}'' \times 2\text{-}\frac{3}{4}'' \times 17'$

PFJ



STOCK CODE
A 522P
(1394577)

DIMENSIONS
 $\frac{3}{4}'' \times 3\text{-}\frac{1}{2}'' \times 17'$

PFJ

A 444LP187
(1394514)
A 1694165
444LPF17
(1394513)

$1\frac{1}{16}'' \times 3\text{-}\frac{1}{4}'' \times 87''$
 $1\frac{1}{16}'' \times 3\text{-}\frac{1}{4}'' \times 102''$
 $1\frac{1}{16}'' \times 3\text{-}\frac{1}{4}'' \times 17'$

PFJ

C 444LM
(1394512)

$\frac{9}{16}'' \times 3\text{-}\frac{1}{4}'' \times 16'$

MDF/UL

A 444L
(1382834)

$1\frac{1}{16}'' \times 3\text{-}\frac{1}{4}'' \times \text{RL (6-16')}$

PIN



STOCK CODE
1693028
376PF17
(1394471)

DIMENSIONS
 $1\frac{1}{16}'' \times 2\text{-}\frac{1}{4}'' \times 83\text{-}\frac{1}{2}''$
 $1\frac{1}{16}'' \times 2\text{-}\frac{1}{4}'' \times 17'$

PFJ



STOCK CODE
445FJI87
(1382841)
445FJI102
(1405210)
A 445FJF17
(1394516)

DIMENSIONS
 $2\frac{1}{32}'' \times 3\text{-}\frac{7}{32}'' \times 87''$
 $1\frac{1}{16}'' \times 3\text{-}\frac{1}{4}'' \times 102''$
 $1\frac{1}{16}'' \times 3\text{-}\frac{1}{4}'' \times 17'$

FJR

445PI87
(1382849)
445PF17
(1394520)

PFJ

445M
(1382843)

MDF/UL



STOCK CODE
A 371P
(1394465)

DIMENSIONS
 $1\frac{1}{16}'' \times 2\text{-}\frac{15}{16}'' \times 15'$

FJR



STOCK CODE
A 361PI87
(1394458)
A 361PF17
(1394457)

DIMENSIONS
 $1\frac{1}{16}'' \times 3\text{-}\frac{1}{4}'' \times 87''$
 $1\frac{1}{16}'' \times 3\text{-}\frac{1}{4}'' \times 17'$

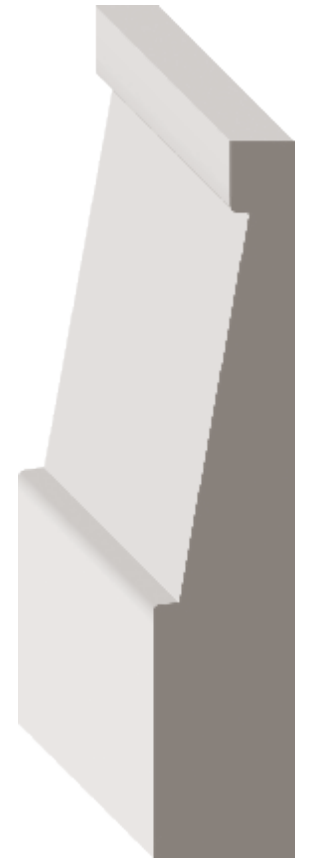
PFJ



STOCK CODE
1692570

DIMENSIONS
 $1\frac{1}{16}'' \times 2\text{-}\frac{3}{4}'' \times 17'$

PFJ



STOCK CODE
1692571

DIMENSIONS
 $1\frac{1}{16}'' \times 3\text{-}\frac{1}{2}'' \times 17'$

PFJ



STOCK CODE
A 1683696

DIMENSIONS
 1¹/₁₆" x 3-1/2" x 17'
PFJ

STOCK CODE
A 1677973
 1682984

DIMENSIONS
 5/8" x 3-1/4" x 17'
 3/4" x 3-1/2" x 17'
MDF/UL

STOCK CODE
C 1680633

DIMENSIONS
 1-1/16" x 3-11/16" x 17'
PFJ

STOCK CODE
A 1693736
A 481SFJF17
 (1671103)

DIMENSIONS
 1¹/₁₆" x 3-1/2" x 87"
 1¹/₁₆" x 3-1/2" x 17'
FJR

A 1693735

DIMENSIONS
 1¹/₁₆" x 3-1/2" x 17'
PFJ

A 481BBMI90
 (1394547)

DIMENSIONS
 1¹/₁₆" x 3-1/2" x 90"

A 481BBM
 (1394546)

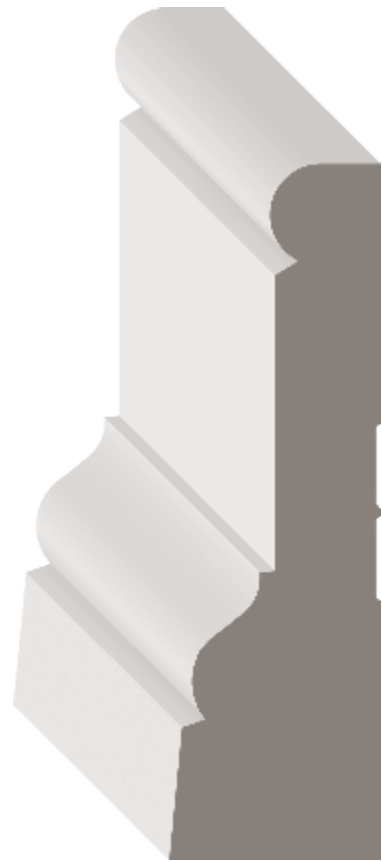
DIMENSIONS
 1¹/₁₆" x 3-1/2" x 16'
MDF/UL

STOCK CODE
A 534P
 (1394589)

DIMENSIONS
 1-1/16" x 3-1/2" x 17'
PFJ

STOCK CODE
A 399PI88
 (1394488)
A 1678975
A 399PF17
 (1394487)

DIMENSIONS
 2⁹/₃₂" x 3-7/32" x 88"
 2⁹/₃₂" x 3-7/32" x 103"
 2⁹/₃₂" x 3-7/32" x 17'
PFJ



STOCK CODE
A 1694850
DIMENSIONS
 1-1/16" x 3-1/2" x 17'
PFJ

STOCK CODE
C 1694177
C 1694175
DIMENSIONS
 1-1/16" x 3-3/4" x 88"
 1-1/16" x 3-3/4" x 17'
PFJ

STOCK CODE
A 523FJ188
 (1394580)
 523FJ1102
 (1394579)
 523FJ
 (1394578)
DIMENSIONS
 1-1/16" x 3-1/2" x 88"
 1-1/16" x 3-1/2" x 102"
 1-1/16" x 3-1/2" x 17'

FJR

A 523PI88
 (1394584)
A 1416207
 523P
 (1462226)
DIMENSIONS
 1-1/16" x 3-1/2" x 88"
 1-1/16" x 3-1/2" x 17'

PFJ

523M
 (1382899)
DIMENSIONS
 1" x 3-1/2" x 16'

MDF/UL

STOCK CODE
A 553P
 (1394594)
DIMENSIONS
 1 1/16" x 3-1/2" x 17'
PFJ

STOCK CODE
A 341PI88
 (1394439)
DIMENSIONS
 1 1/16" x 3-1/2" x 88"
PFJ

STOCK CODE
A 1394446
DIMENSIONS
 1 1/16" x 3-1/2" x 17'
PFJ



STOCK CODE
A 425P
 (1394499)

DIMENSIONS
 1¹/₁₆" x 4⁻¹/₄" x 17'

PFJ



STOCK CODE
A 524P
 (1394585)

DIMENSIONS
 1" x 4⁻¹/₄" x 17'

PFJ



STOCK CODE
 481BP
 (1394548)

DIMENSIONS
 1⁻³/₁₆" x 4⁻¹/₄" x 17'

PFJ



STOCK CODE
A 481PF17
 (1394549)

DIMENSIONS
 1⁻³/₁₆" x 4⁻⁹/₁₆" x 17'

PFJ



STOCK CODE
A 600P
 (1394597)

DIMENSIONS
 5/8" x 3⁻¹/₂" x 16'

PFJ



STOCK CODE
A 606P
 (1394599)

DIMENSIONS
 1¹/₁₆" x 5⁻¹/₂" x 16'

PFJ

CHAIR RAIL

CHAIR RAIL

Chair rail creates a beautiful room accent that's practical, yet decorative. Applied to a wall anywhere from 24 to 72 inches up from the floor, they can be used to protect the wall from scuffs and dents from the backs of chairs. The chair rail runs along the wall, parallel with the baseboard and is often paired with a wainscot treatment.



STOCK CODE
390P
(1382796)

DIMENSIONS
1 1/16" x 2-5/8" x 16'

PFJ



STOCK CODE
A 298P
(1394412)

DIMENSIONS
1 1/16" x 2-3/4" x 16'

PFJ



STOCK CODE
A 299P
(1394413)

DIMENSIONS
1-1/8" x 2-1/2" x 16'

PFJ



STOCK CODE
A 297P
(1382708)

DIMENSIONS
1 1/16" x 3" x 16'

PFJ



STOCK CODE
C 300FJ
(1394416)

DIMENSIONS
1-1/16" x 3" x 16'

FJR

300P
(1382712)

1-1/16" x 3" x 16'

PFJ



STOCK CODE
1692572

DIMENSIONS
9/16" x 3" x 16'

PFJ



STOCK CODE
C 397FJ
(1394484)

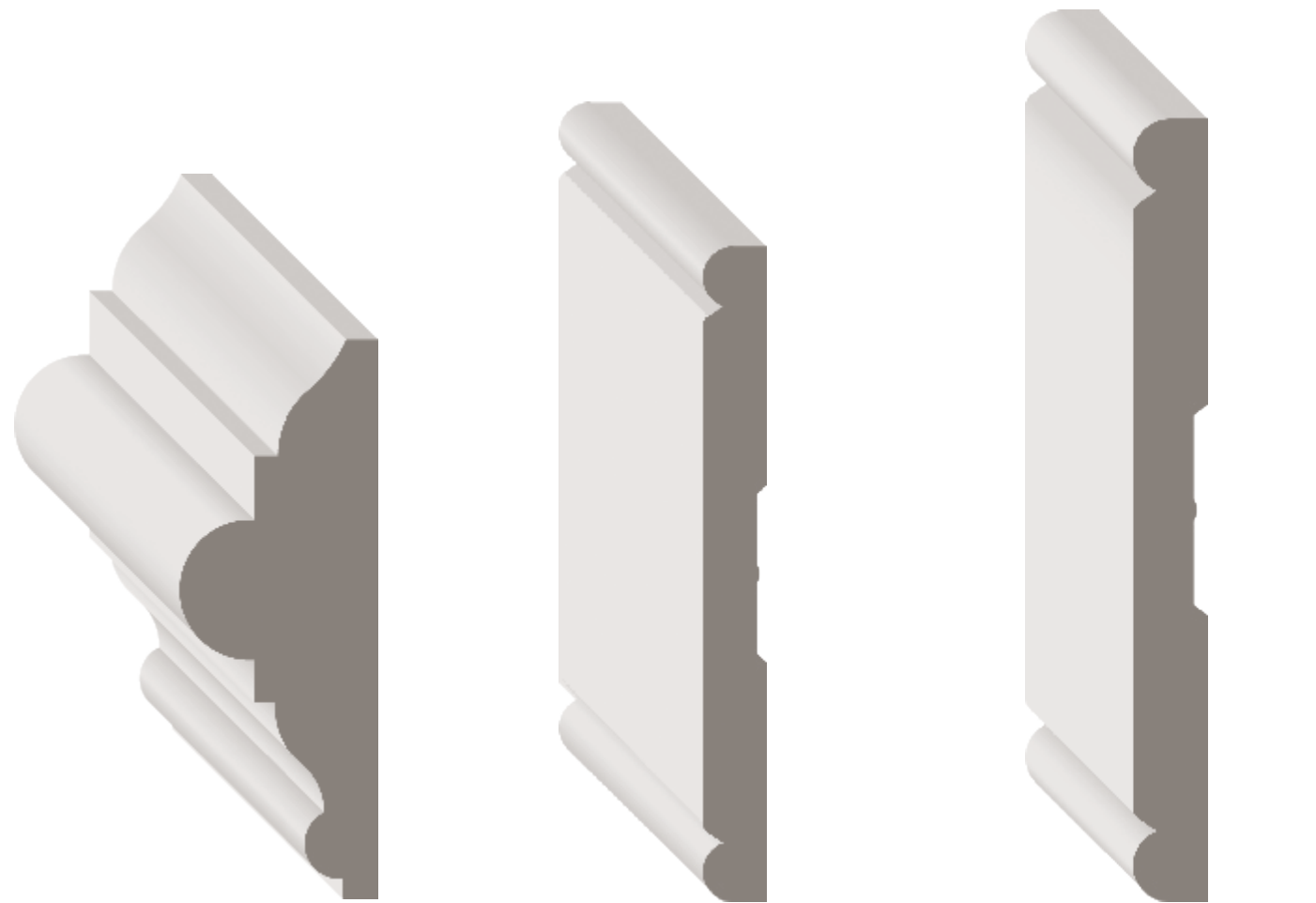
DIMENSIONS
1" x 3-9/16" x 16'

FJR

1416125

1" x 3-9/16" x 16'

PFJ



STOCK CODE
397M
(1382798)

DIMENSIONS
1" x 3-1/2" x 16'

MDF/UL

STOCK CODE
956WWM
(1383087)

DIMENSIONS
1/2" x 4-1/4" x 16'

MDF/UL

STOCK CODE
956LWWM
(1394648)

DIMENSIONS
1/2" x 5-1/4" x 16'

957P
(1394652)

1/2" x 4-1/2" x 16'

PFJ

STOCK CODE
398FJ
(1394486)

DIMENSIONS
1/2" x 5-1/4" x 16'

FJR

CROWN

Crown moulding is versatile. Designed to sit at an angle between the wall and ceiling, it can be used as part of the mantel on a fireplace surround, integrated into the architrave or header over a door or window, or to encase the top of a column.

STOCK CODE
52FJ
(1394586)

DIMENSIONS
9/16" x 2-3/4" x 16'

FJR

STOCK CODE
52P
(1394587)

DIMENSIONS
9/16" x 2-3/4" x 16'

PFJ

49LFJ
(1382884)

9/16" x 3-9/16" x 16'

FJR

STOCK CODE
49SMD
(1394559)

DIMENSIONS
15/32" x 3-5/8" x 16'

49MD
(1394558)

17/32" x 3-19/32" x 16'

MDF/UL

52
(1416201)

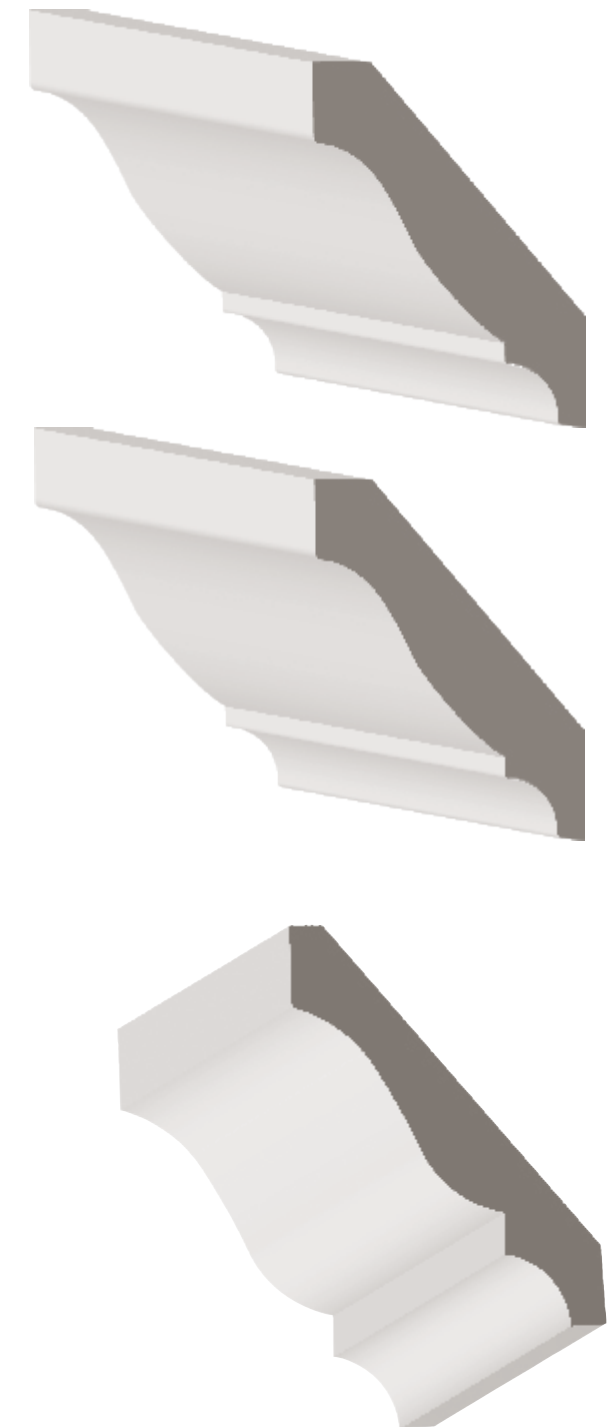
9/16" x 2-3/4" x RL [8-16']

PIN

STOCK CODE
49LP
(1382885)

DIMENSIONS
9/16" x 3-9/16" x 16'

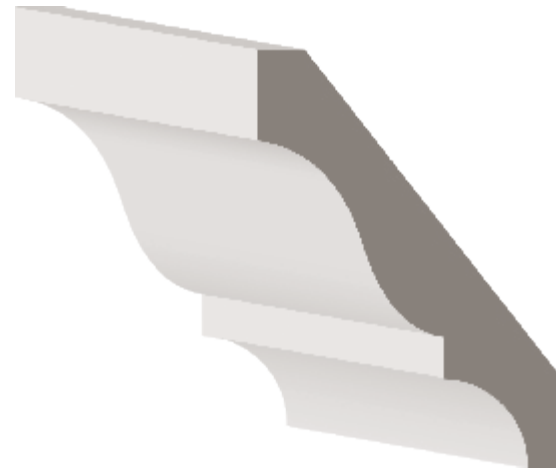
PFJ



STOCK CODE
49L
(1382883)

DIMENSIONS
1/2" x 3-9/16" x RL (8-16')

PIN



STOCK CODE
A 54P
(1394593)

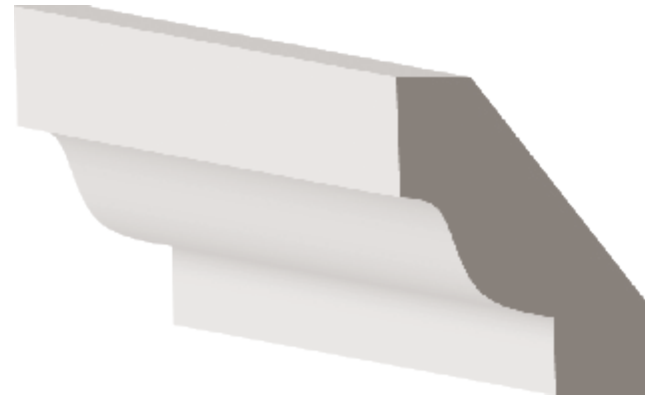
DIMENSIONS
9/16" x 2-1/4" x 16'

PFJ

STOCK CODE
A 60
(1394596)

DIMENSIONS
9/16" x 1-3/4" x RL (8-16')

PIN



STOCK CODE
A 51P
(1394575)

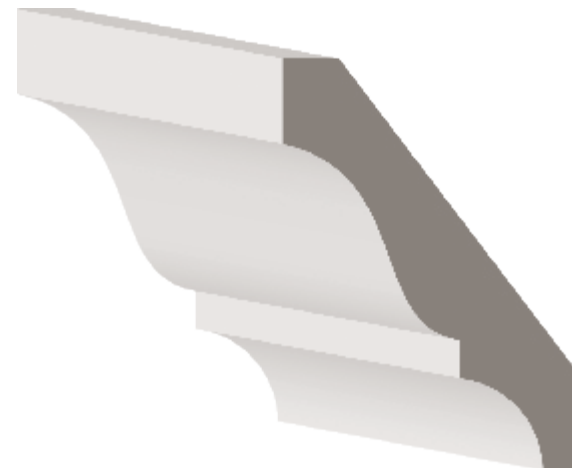
DIMENSIONS
9/16" x 3-1/4" x 16'

PFJ

STOCK CODE
A 51
(1394568)

DIMENSIONS
9/16" x 3-1/4" x 16'

PIN



STOCK CODE
A 48M
(1394550)

DIMENSIONS
9/16" x 4-1/4" x 16'

MDF/UL



STOCK CODE
A 48P
(1394551)

DIMENSIONS
9/16" x 4-1/4" x 16'

PFJ

STOCK CODE
A 45N
(1394326)

DIMENSIONS
1 1/16" x 5-5/8" x 16'

FJR



STOCK CODE
47LFJ
(1382873)

DIMENSIONS
9/16" x 4-9/16" x 16'

FJR

STOCK CODE
47MD
(1394542)

DIMENSIONS
9/16" x 4-5/8" x 16'

MDF/UL



STOCK CODE
47LP
(1382874)

DIMENSIONS
 $\frac{9}{16}$ " x 4- $\frac{9}{16}$ " x 16'

PFJ

47L
(1382872)

$\frac{9}{16}$ " x 4- $\frac{9}{16}$ " x RL (6-16')

PIN

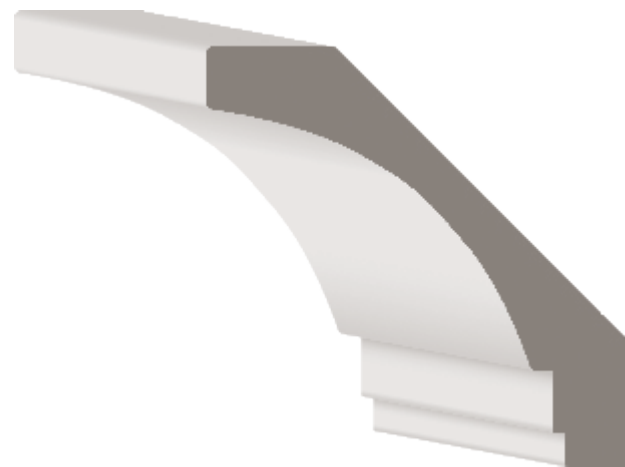


STOCK CODE
900
(1328541)
901
(1328544)

DIMENSIONS
1- $\frac{3}{16}$ " x 5- $\frac{1}{4}$ " x 16'

MDF/UL

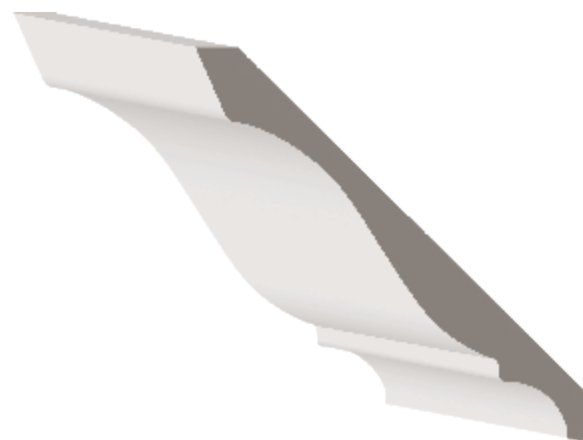
1- $\frac{3}{16}$ " x 6- $\frac{3}{4}$ " x 16'



STOCK CODE
45MD
(1394528)

DIMENSIONS
 $\frac{9}{16}$ " x 5- $\frac{3}{16}$ " x 16'

MDF/UL



STOCK CODE
45LP
(1394526)

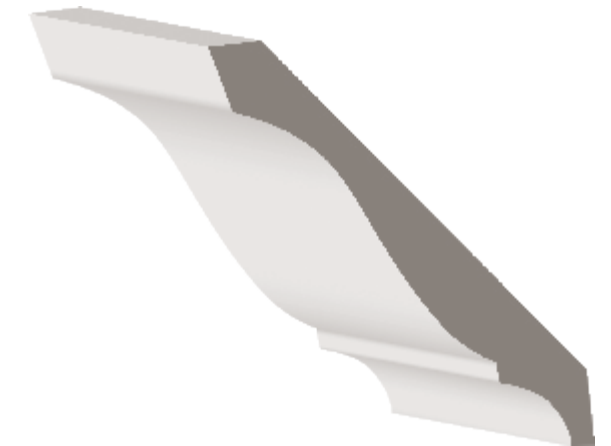
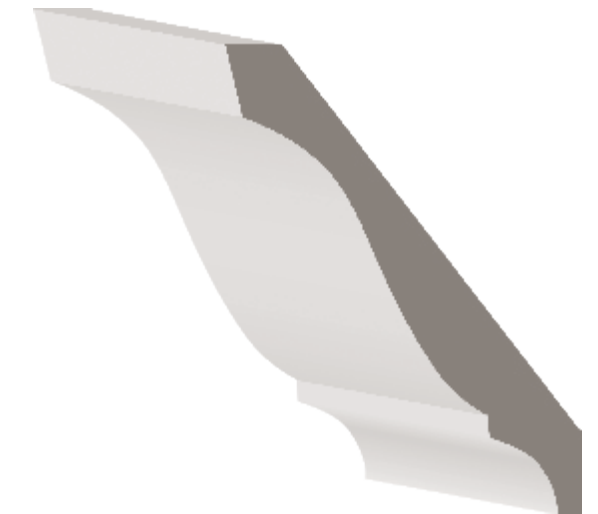
DIMENSIONS
 $\frac{9}{16}$ " x 5- $\frac{3}{16}$ " x 16'

PFJ

STOCK CODE
45P
(1382863)

DIMENSIONS
 $\frac{11}{16}$ " x 5- $\frac{1}{4}$ " x 16'

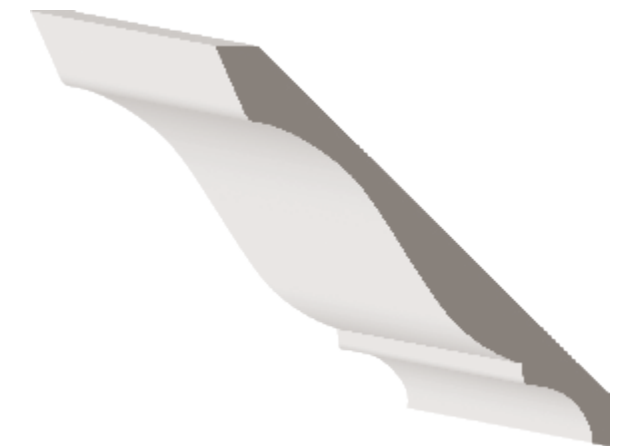
PFJ



STOCK CODE
45
(1394522)

DIMENSIONS
 $\frac{9}{16}$ " x 5- $\frac{3}{16}$ " x RL (8-16')

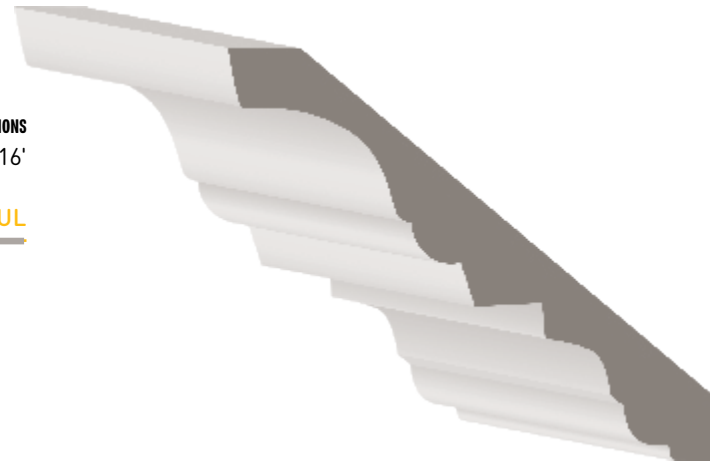
PIN



C STOCK CODE
37CCM
(1394475)

DIMENSIONS
 $\frac{9}{16}$ " x 5" x 16'

MDF/UL



STOCK CODE
1680590

DIMENSIONS
 $2\frac{1}{32}$ " x $4\frac{1}{4}$ " x 16'

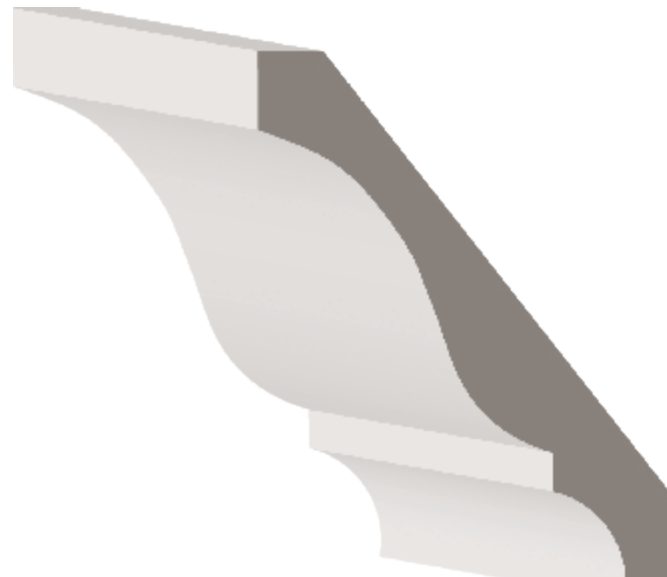
MDF/UL



A STOCK CODE
43M
(1382827)

DIMENSIONS
1" x $6\frac{15}{16}$ " x 16'

MDF/UL



STOCK CODE
504LMS
(1394564)

DIMENSIONS
 $1\frac{1}{16}$ " x 7" x 16'

MDF/UL



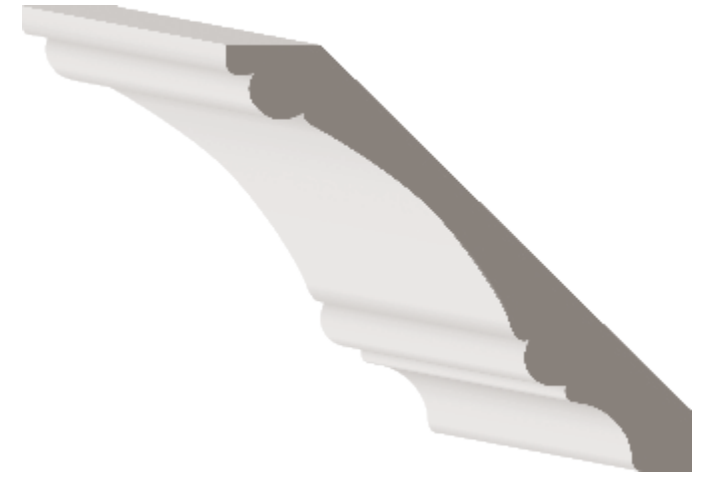
A STOCK CODE
655M
(1394617)

DIMENSIONS
 $\frac{3}{4}$ " x $5\frac{1}{4}$ " x 16'

C CVS1W1PMD16
(1324425)

$1\frac{3}{16}$ " x $5\frac{7}{16}$ " x 16'

MDF/UL



STOCK CODE
2413M
(1394389)

DIMENSIONS
 $1\frac{3}{16}$ " x $5\frac{1}{4}$ " x 16'

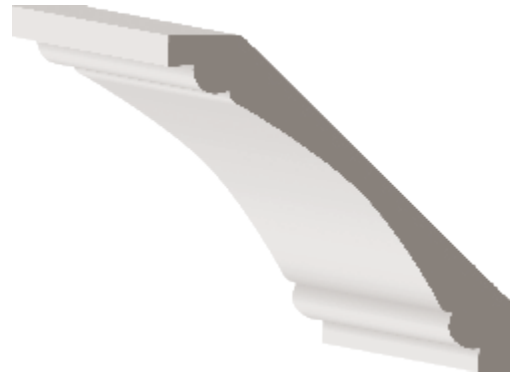
MDF/UL



STOCK CODE
A 440M
 (1644964)

DIMENSIONS
 $2\frac{1}{32}'' \times 4\frac{1}{4}'' \times 16'$

MDF/UL



STOCK CODE
A 2413P
 (1394390)
 2413WM
 (1662831)

DIMENSIONS
 $2\frac{1}{32}'' \times 5\frac{1}{4}'' \times 16'$
 $2\frac{3}{32}'' \times 7\frac{1}{4}'' \times 16'$

PFJ



STOCK CODE
 2153M
 (1394376)

DIMENSIONS
 $\frac{3}{4}'' \times 5\frac{1}{4}'' \times 16'$

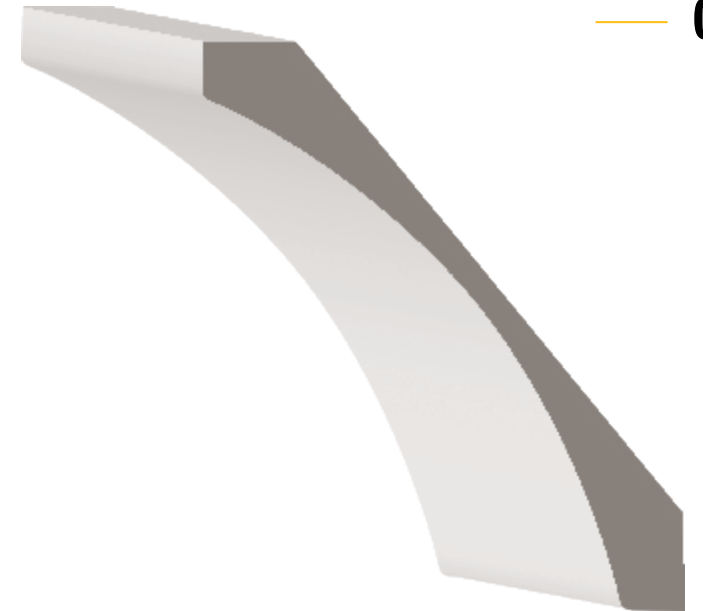
MDF/UL



STOCK CODE
A 600M
 (1644965)
 505M
 (1394567)
A 39M
 (1394489)

DIMENSIONS
 $2\frac{3}{32}'' \times 6\frac{3}{8}'' \times 16'$
 $1'' \times 7'' \times 16'$
 $1'' \times 7\frac{3}{16}'' \times 16'$

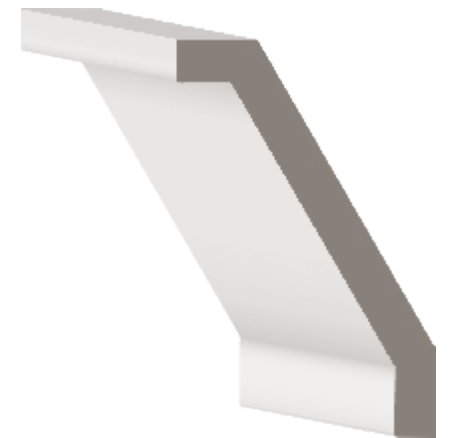
MDF/UL



STOCK CODE
C CTC1W3
 (1675702)

DIMENSIONS
 $1'' \times 4\frac{1}{4}'' \times 16'$

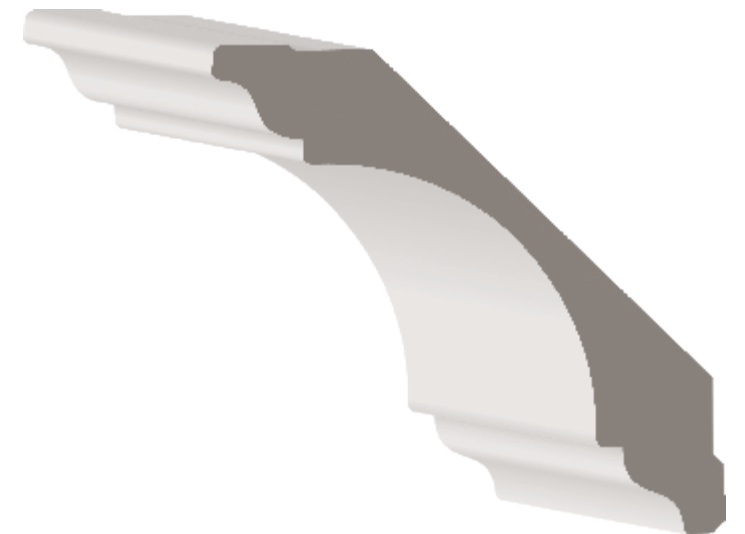
MDF/UL

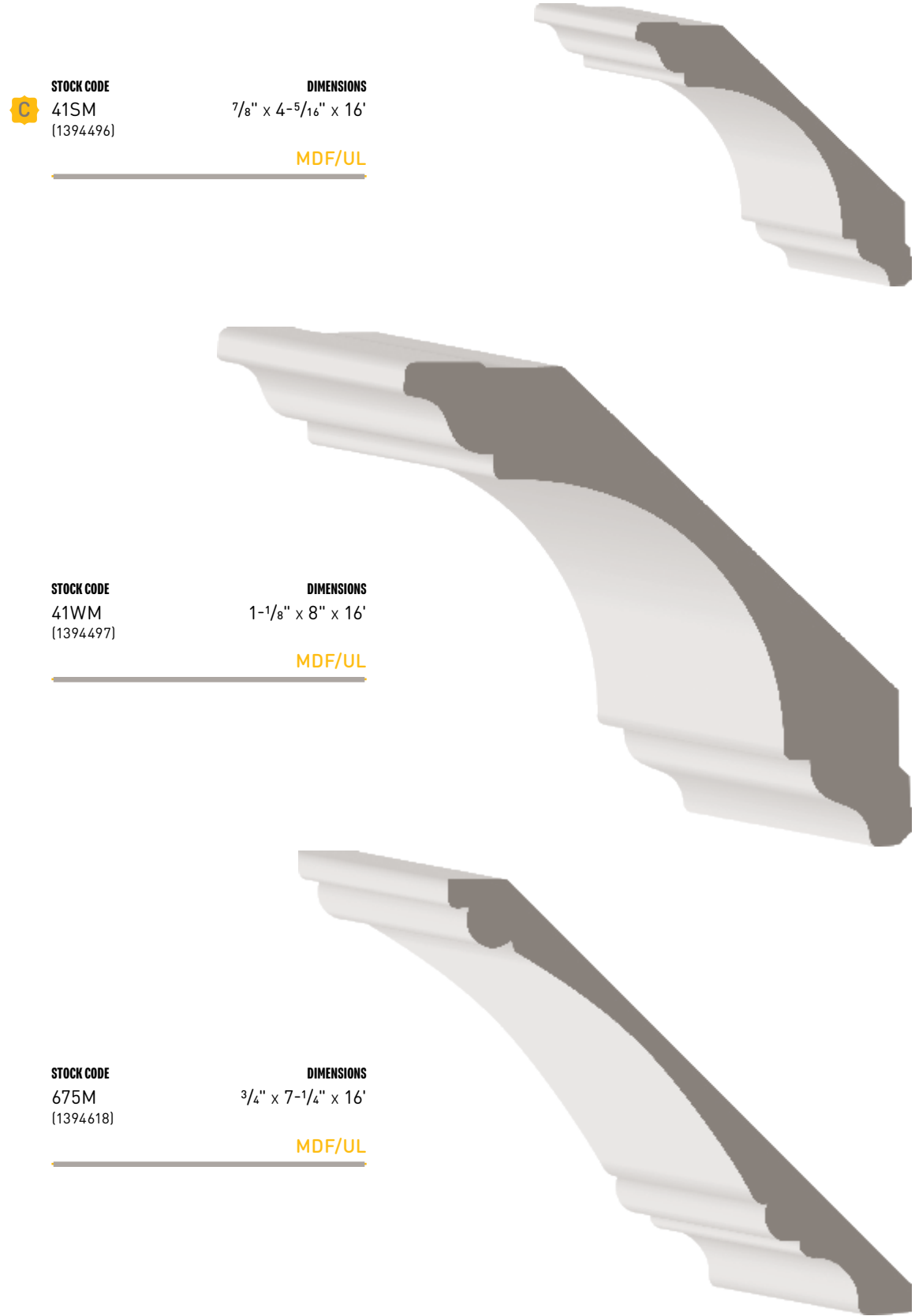


STOCK CODE
 41M
 (1382814)

DIMENSIONS
 $1\frac{3}{16}'' \times 6\frac{5}{16}'' \times 16'$

MDF/UL





STOCK CODE
C 41SM
 [1394496]

DIMENSIONS
 7/8" x 4-5/16" x 16'

MDF/UL

STOCK CODE
 41WM
 [1394497]

DIMENSIONS
 1-1/8" x 8" x 16'

MDF/UL

STOCK CODE
 675M
 [1394618]

DIMENSIONS
 3/4" x 7-1/4" x 16'

MDF/UL

STOP

In door trim, a stop is attached to the door jamb on both sides and at the top. It is where the door comes to a rest when it is closed, stopping the door from moving any further and covering the gap that would otherwise appear between the door and the jamb. In window trim, a stop holds the bottom sash of a double-hung window in place and can also be used as an apron under window stools.



STOCK CODE
 942
 [1394644]

DIMENSIONS
 3/8" x 5/8" x RL (8-16')

A 876
 [1394633]

PIN

STOCK CODE
A 1688812
A 1694958
A 1685883
A 1676813

DIMENSIONS
 3/8" x 1-1/4" x 81"
 3/8" x 1-1/4" x 97"
 3/8" x 1-1/4" x 17"
 7/16" x 1-3/8" x 96"

PFJ

STOCK CODE
A 886
 [1462392]

DIMENSIONS
 3/8" x 1-3/8" x RL (8-16')

PIN

A 1686930
A 1696175

DIMENSIONS
 3/8" x 1-1/4" x 85"
 3/8" x 1-1/4" x RL (8-16')

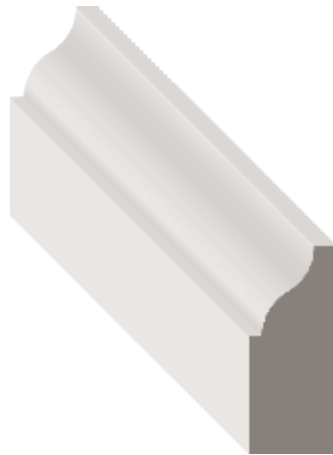
PIN



STOCK CODE
941
(1394643)

DIMENSIONS
3/8" x 3/4" x RL (8-16')

PIN



STOCK CODE
940
(1394642)

DIMENSIONS
3/8" x 7/8" x RL (8-16')

PIN



STOCK CODE
937
(1394640)

DIMENSIONS
3/8" x 1-1/4" x RL (8-16')

STOCK CODE
A 946
(1522341)

DIMENSIONS
3/8" x 1-3/8" x RL (7-16')

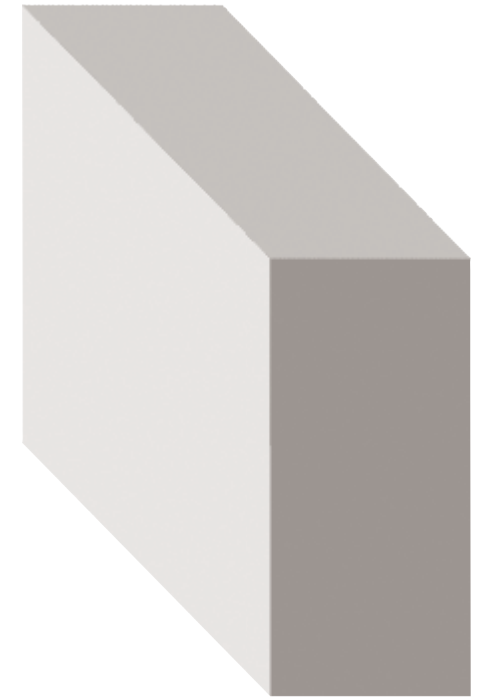
STOCK CODE
935
(1394639)

DIMENSIONS
3/8" x 1-5/8" x RL (8-16')

PIN

FLATSTOCK

Finished boards that are used for a multitude of purposes, including shelving, window ledges, base, and casing.



	STOCK CODE	THICKNESS	HEIGHT	LENGTH	SPECIES
C	12S4SM (1577645)	1/16"	1-1/2"	16'	MDF/UL
C	1678003	1/16"	2-1/2"	16'	MDF/UL
A	1689641	1/16"	3-1/2"	81-1/4"	MDF/UL
A	1681158	1/16"	3-1/2"	88"	MDF/UL
	14S4SMF08 (1394258)	1/16"	3-1/2"	8'	MDF/UL
A	14S4SM (1566875)	1/16"	3-1/2"	16'	MDF/UL
	16S4SM (1511011)	1/16"	5-1/2"	16'	MDF/UL
	18S4SM (1511014)	1/16"	7-1/4"	16'	MDF/UL
	110S4SM (1521204)	1/16"	9-1/4"	16'	MDF/UL
	112S4SM (1484204)	1/16"	11-1/4"	16'	MDF/UL
A	1415927	1/16"	11-1/4"	18'	MDF/UL
A	FF34UL (1404783)	3/4"	49"	8'	MDF/UL
C	1484904	1"	3-1/2"	16'	MDF/UL
C	546S4SM (1394591)	1"	5-1/2"	16'	MDF/UL
A	1693415	9/16"	3-1/2"	87"	PFJ
	1577740	9/16"	3-1/2"	17'	PFJ
	1416328	9/16"	5-1/2"	16'	PFJ
C	98S4SP (1688856)	9/16"	7-1/4"	16'	PFJ
C	1697003	21/32"	2-1/2"	85"	PFJ
A	1697002	21/32"	2-1/2"	17'	PFJ
	1696654	21/32"	2-7/8"	90"	PFJ
A	1682686	21/32"	3-1/2"	88"	PFJ
	1677899	21/32"	3-1/2"	90"	PFJ
A	1686517	21/32"	3-1/2"	97-1/4"	PFJ
C	1577743	21/32"	3-1/2"	102"	PFJ
	14S4SP1 (1382528)	21/32"	3-1/2"	16'	PFJ
	14S4SP1F17 (1394262)	21/32"	3-1/2"	17'	PFJ
	16S4SP1 (1394311)	21/32"	5-1/2"	16'	PFJ
	18S4SP1 (1394347)	21/32"	7-1/4"	16'	PFJ
	110S4SP1 (1394185)	21/32"	9-1/4"	16'	PFJ
	112S4SP1 (1382427)	21/32"	11-1/4"	16'	PFJ
	249P (1394393)	11/16"	1-1/2"	16'	PFJ
	1680727	23/32"	1-1/2"	16'	PFJ
	1688854	23/32"	2-1/2"	17'	PFJ
	1382734	23/32"	3-1/2"	16'	PFJ
C	1688865	23/32"	3-1/2"	17'	PFJ
	346S4SP (1382738)	23/32"	5-1/2"	16'	PFJ

	STOCK CODE	THICKNESS	HEIGHT	LENGTH	SPECIES
	348S4SP (1382740)	23/32"	7-1/4"	16'	PFJ
	3410S4SP (1382732)	23/32"	9-1/4"	16'	PFJ
	3412S4SP (1382733)	23/32"	11-1/4"	16'	PFJ
	544S4SP1 (1405286)	1"	3-1/2"	16'	PFJ
	546S4SP1 (1688860)	1"	5-1/2"	16'	PFJ
C	548S4SP1 (1405290)	1"	7-1/4"	16'	PFJ
C	5410S4SP1 (1405284)	1"	9-1/4"	16'	PFJ
C	5412S4SP1 (1405285)	1"	11-1/4"	16'	PFJ
A	1462044	1/2"	3/4"	16'	PFJ
A	249 (1394391)	11/16"	1-1/2"	RL (8-16')	PIN
	254 (1416042)	1/2"	3/4"	RL (8-16')	PIN
A	14S4SMR (1394259)	3/4"	3-1/2"	16'	RMDF
A	16S4SMR (1394309)	3/4"	5-1/2"	16'	RMDF
A	18S4SMR (1394345)	3/4"	7-1/4"	16'	RMDF
A	110S4SMR (1394183)	3/4"	9-1/4"	16'	RMDF
	112S4SMR (1394204)	3/4"	11-1/4"	16'	RMDF
	116S4SMR (1673320)	3/4"	15-1/4"	16'	RMDF
	FF34 (1327797)	3/4"	49"	8'	RMDF

JAMB

A jamb can refer to either a top (header) jamb or a side (leg) jamb. These are the top and sides of a door or window and often referred to as the frame that the door or sash are installed on.

PANEL MOULD

The use of panel or picture moulding can be an effective and inexpensive way to frame wall paneling, paper or fabric, and add interest to walls.



STOCK CODE	THICKNESS	HEIGHT	LENGTH	SPECIES
COMBINATION JAMBS				
A STOP APPLIED FLAT JAMB 1697621	1"	4-9/16"	81-11/16"	PFJ
A STOP APPLIED FLAT JAMB 1697622	1"	4-9/16"	97-11/16"	PFJ
DRJ4916P (1404762)	1-3/16"	4-9/16"	81-11/16"	PFJ
DRJ499612P (1404763)	1-3/16"	4-9/16"	97-11/16"	PFJ
A 1696641	1-3/16"	6-9/16"	81-11/16"	PFJ
A DRJ699612P (1404764)	1-3/16"	6-9/16"	97-11/16"	PFJ
FLAT JAMBS				
A FJ4981 (1404784)	1 1/8"	4-9/16"	81-11/16"	PIN
FJR4204FJ (1404797)	1 1/8"	4-9/16"	17'	FJR
FJR4981RP (1404800)	1 1/8"	4-9/16"	81-11/16"	FJR
A FJR4981RP80 (1415480)	1 1/8"	4-9/16"	97-11/16"	FJR
A 1686536	1 1/8"	6-9/16"	81-11/16"	FJR
FJR4204P (1382891)	1 1/8"	4-9/16"	17'	PFJ
FJP4981P (1404786)	1 1/8"	4-9/16"	81-11/16"	PFJ
A FJP4981P80 (1393281)	1 1/8"	4-9/16"	97-11/16"	PFJ
A FJP478P80 (1404785)	1 1/8"	4-7/8"	97-11/16"	PFJ
A FJP6981P (1404788)	1 1/8"	6-9/16"	81-11/16"	PFJ
A FJP6981P80 (1404789)	1 1/8"	6-9/16"	97-11/16"	PFJ
FJR6198P (1404803)	1 1/8"	6-9/16"	17'	PFJ
FJR1278P (1404792)	2 1/32"	2-7/8"	16'	PFJ
SPLIT JAMBS				
A SJS48058W (1404857)	1-1/16"	4-5/8"	81-11/16"	PIN
SJS48058WFJ (1404858)	1-1/16"	4-5/8"	81-11/16"	FJR
SJS49658WFJ (1639785)	1-1/16"	4-5/8"	97-11/16"	FJR
SJS68058WFJ (1644970)	1-1/16"	6-9/16"	81-11/16"	FJR
A 1696147	1-1/16"	6-9/16"	97-11/16"	FJR
SJS48058WP (1404859)	1-1/16"	4-5/8"	81-11/16"	PFJ
A SJS48058WP-A (1404860)	1-1/16"	4-5/8"	81-11/16"	PFJ
SJS49658WP (1426537)	1-1/16"	4-5/8"	97-11/16"	PFJ
SJS68058P (1393408)	1-1/16"	6-9/16"	81-11/16"	PFJ
A SJS69658P (1404868)	1-1/16"	6-9/16"	97-11/16"	PFJ
SINGLE RABBIT JAMBS				
A 1695312	1-7/32"	4-9/16"	81-15/16"	PFJ
A 1695313	1-7/32"	4-9/16"	98"	PFJ
A 1695324	1-7/32"	6-9/16"	81-3/4"	PFJ
A 1695325	1-7/32"	6-9/16"	98"	PFJ

STOCK CODE
A 970
(1394654)

DIMENSIONS
7/32" x 1-15/32" x RL (8-16')

STOCK CODE
A 972
(1462450)

DIMENSIONS
3/8" x 2" x RL (8-16')

PIN

STOCK CODE
C 989LFJ
(1394666)

DIMENSIONS
3/8" x 1-1/8" x 16'

FJR

STOCK CODE
989L
(1394665)

DIMENSIONS
3/8" x 1-1/8" x RL (8-16')

PIN

STOCK CODE
987L
(1394662)

DIMENSIONS
3/8" x 1-3/8" x RL (6-16')

PIN

STOCK CODE
988L
(1394663)

DIMENSIONS
3/8" x 1-1/2" x RL (8-16')

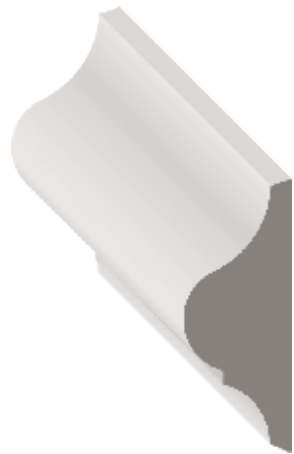
PIN

STOCK CODE
C 987
(1394661)

DIMENSIONS
3/8" x 2" x RL (8-16')

PIN

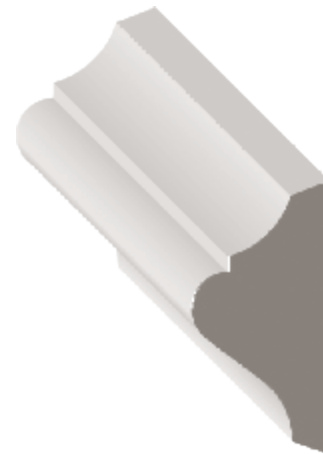
PANEL MOULD



STOCK CODE
A 730P
(1394624)

DIMENSIONS
5/8" x 1-5/8" x 16'

PFJ



STOCK CODE
A 153P
(1394275)

DIMENSIONS
5/8" x 1-1/2" x 16'

PFJ

183
(1382608)

9/16" x 1-1/8" x RL (8-16')

PIN



STOCK CODE
A 1217
(1394228)

DIMENSIONS
1/2" x 1-7/16" x RL (8-16')

PIN



STOCK CODE
A 05M
(1394150)

DIMENSIONS
9/16" x 1-9/16" x 16'

MDF/UL



STOCK CODE
A 1692573

DIMENSIONS
1 1/32" x 1-1/4" x 16'

PFJ



STOCK CODE
42PR
(1394501)

DIMENSIONS
1-1/16" x 1-9/16" x 16'

PFJ



STOCK CODE
1692578

DIMENSIONS
5/8" x 2" x 16'

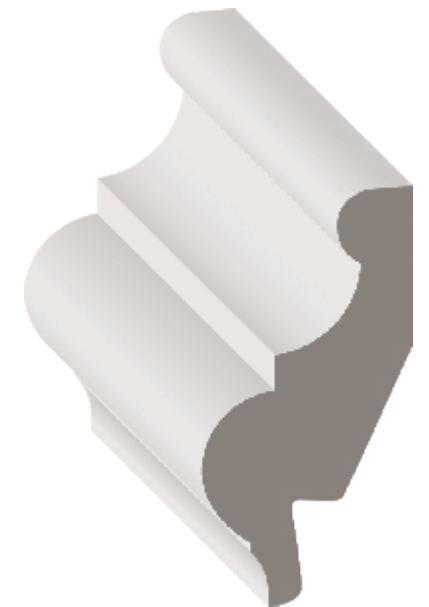
PFJ



STOCK CODE
42P
(1394500)

DIMENSIONS
1-1/16" x 1-9/16" x 16'

PFJ



STOCK CODE
02P
(1394149)

DIMENSIONS
1 1/16" x 2-7/16" x 16'

FJR

STOCK CODE
A 185
(1394334)

DIMENSIONS
15/16" x 1-7/8" x RL (8-16')

PIN

STOOL

The window stool is the part of the window that is visible and commonly called the window sill. The sill of the window is at the bottom horizontal area of a window opening in the wall that supports the stool and is not visible once a stool has been installed.



STOCK CODE	DIMENSIONS
1021P (1577734)	1 ¹ / ₁₆ " x 5- ¹ / ₄ " x 16'
1021WP (1577736)	1 ¹ / ₁₆ " x 7- ¹ / ₄ " x 16'

PFJ

1021FJ (1567235)	1 ¹ / ₁₆ " x 5- ¹ / ₄ " x 16'
1577819	1 ¹ / ₁₆ " x 7- ¹ / ₄ " x 16'

FJR

1021WM (1394161)	1 ¹ / ₁₆ " x 7- ¹ / ₄ " x 16'
---------------------	---

MDF/UL



STOCK CODE	DIMENSIONS
1021M (1382351)	9/ ₁₆ " x 5- ¹ / ₄ " x 16'

MDF/UL



STOCK CODE	DIMENSIONS
1022M (1382355)	9/ ₁₆ " x 4- ¹ / ₂ " x 16'

MDF/UL



STOCK CODE	DIMENSIONS
A 1022BNP (1394164)	1 ¹ / ₁₆ " x 1- ⁵ / ₈ " x 16'

PFJ



STOCK CODE	DIMENSIONS
A 1195FJ (1394225)	1 ¹ / ₁₆ " x 2- ⁷ / ₁₆ " x 16'

FJR

1195P (1394226)	1 ¹ / ₁₆ " x 2- ⁷ / ₁₆ " x 16'
--------------------	--

PFJ



STOCK CODE	DIMENSIONS
1163P (1382440)	1- ¹ / ₁₆ " x 3- ¹ / ₄ " x 16'

PFJ



STOCK CODE	DIMENSIONS
C 1164P (1382443)	1- ¹ / ₁₆ " x 2- ³ / ₄ " x 16'

PFJ

MISCELLANEOUS

T-ASTRAGAL

An astragal is commonly used as a seal between a pair of double doors, often in conjunction with a flush bolt. The astragal closes the clearance gap between two doors, making closing a pair of doors together easier. The vertical moulding attaches to a stile on one of a pair of doors against which the other door strikes or closes.



STOCK CODE
C 1305PF07
 (1382486)

DIMENSIONS
 1-1/4" x 2" x 7'

PFJ

BED MOULD

Similar to crown moulding, a bed mould is used to cover the joint between the ceiling and wall. Bed moulds can be either sprung or plain, or flush to the wall as an extension of a cornice mould.



STOCK CODE
C 70
 (1462304)

DIMENSIONS
 9/16" x 2-3/4" x RL (8-16')

PIN



STOCK CODE
C 75FJ
 (1394628)

DIMENSIONS
 9/16" x 1-5/8" x 16'

FJR



STOCK CODE
A 75P
 (1382995)
 74P
 (1394626)

DIMENSIONS
 9/16" x 1-5/8" x 16' 9/16"
 9/16" x 1-3/4" x 16' 9/16"

PFJ

MISCELLANEOUS

CHAMFER STRIP

Chamfer strips are best utilized where kitchen cabinet tops meet the walls or as a linoleum cove. Chamfer strips can also be used for window applications.



STOCK CODE
A 995
 (1416339)

DIMENSIONS
 3/4" x 3/4" x RL (6-16')

PIN

BRICK MOULD

A brick mould is mainly used as exterior casing around doors. Brick moulds can also be used in place of a crown and as a transition under window sills.



STOCK CODE
 180P
 (1382605)

DIMENSIONS
 1-1/4" x 2" x 17'

PFJ



STOCK CODE
A 180PI85
 (1394330)

DIMENSIONS
 1-1/4" x 2" x 85"

PFJ

180
 (1382603)

PIN



STOCK CODE
 180PVCF18
 (1382607)

DIMENSIONS
 1-1/4" x 2" x 18' 1-1/4"

PVC

A 1696191
 (1382603)

DIMENSIONS
 1-1/4" x 2" x 40"

PIN

A 1696187
 (1382603)

DIMENSIONS
 1-1/4" x 2" x 83-1/4"

PVC

MISCELLANEOUS

CORNERGUARD

A corner guard can be used to protect the outside edges of the wall from damage and abrasion. Corner guards come in a wide variety of sizes and detailing.



STOCK CODE
205
(1394363)

DIMENSIONS
1-1/8" x 1-1/8" x RL (8-16')

PIN



STOCK CODE
A 205F08
(1394364)

DIMENSIONS
1-1/8" x 1-1/8" x 8'1-1/8"

PIN



STOCK CODE
A 206LF16
(1639733)

DIMENSIONS
1 1/16" x 1 1/16" x 16'

STOCK CODE
C 206L
(1484580)

DIMENSIONS
1 1/16" x 1 1/16" x RL (8-16')

PIN



STOCK CODE
A 205F16
(1394365)

DIMENSIONS
1-1/8" x 1-1/8" x 16'

PIN

COVE

A cove is most commonly used to soften the transition on inside corners but may be used for a wide range of applications.



STOCK CODE
1461743

DIMENSIONS
1 1/16" x 1 1/16" x 16'

PFJ

1000
(1626643)

DIMENSIONS
1 1/16" x 1 1/16" x RL (1-16')

O

A 86
(1394632)

DIMENSIONS
9/16" x 1-5/8" x RL (8-16')

100
(1394151)

DIMENSIONS
1 1/16" x 1 1/16" x RL (8-16')

PIN



STOCK CODE
C 101
(1484114)

DIMENSIONS
1/2" x 1/2" x RL (8-16')

A 100F08
(1382341)

DIMENSIONS
1 1/16" x 1 1/16" x 8'

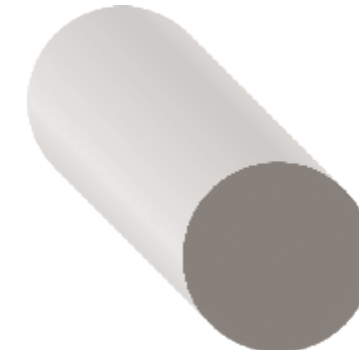
A 100F16
(1394153)

DIMENSIONS
1 1/16" x 1 1/16" x 16'

PIN

FULL ROUND

A full round can be used for numerous purposes and projects. Some of the more common uses are closet poles, curtain rods and towel rods. Similar mouldings include half rounds and quarter rounds.



STOCK CODE
233
(1685962)

DIMENSIONS
1-1/4" x 1-1/4" x 16'

LVL

LATTICE

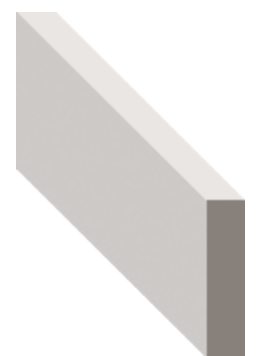
A thin strip of flat moulding commonly used to hide seams and edges. Lattice is one of the most common pieces of moulding and can be used in a multitude of different projects.



STOCK CODE
266
(1382686)

DIMENSIONS
1/4" x 1-1/2" x RL (8-16')

PIN



STOCK CODE
268SP
(1394397)

DIMENSIONS
1/4" x 1-1/8" x 16'

PIN

HAND RAIL

Hand rails provide safety, stability and support for staircases and can be paired with a decorative rosette when attached to a wall. Handrails come in many different styles and can be both plowed and unplowed.

Wall rail is attached to a wall with rail brackets along the closed side of a stairway.



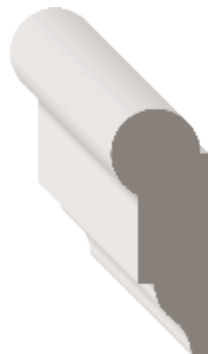
STOCK CODE	DIMENSIONS
240P (1382676)	1-1/4" x 2-1/4" x 17'
PFJ	
240F16 (1394386)	1-1/4" x 2-1/4" x 16'
C 1696126	1-1/4" x 2-1/4" x 18'
C 231F16 (1394379)	1-7/16" x 1-5/8" x 16'
PIN	

PICTURE MOULD

A picture mould or panel moulding can be an effective and inexpensive way to frame wall paneling, paper or fabric, and add interest to walls. Picture moulds can also be called picture rail moulds or picture frame moulds and are traditionally used to hang wall art with wire on the back.



STOCK CODE	DIMENSIONS
A 273FJ (1394399)	1 1/16" x 1-3/4" x 16'
FJR	



STOCK CODE	DIMENSIONS
273P (1394400)	1 1/16" x 1-3/4" x 16'
PFJ	

QUARTER ROUND

A quarter round is a moulding that comes in several sizes and serves a variety of functions. Quarter Rounds are most often used with baseboards and can be useful to cover gaps where the baseboard meets the floor.



STOCK CODE	DIMENSIONS
105 (1382360)	3/4" x 3/4" x RL (8-16')
PIN	
1050 (1394169)	3/4" x 3/4" x RL (1-16')
O	



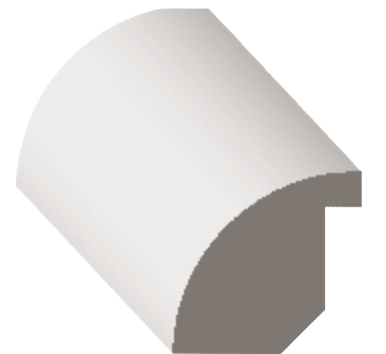
STOCK CODE	DIMENSIONS
106 (1461763)	1 1/16" x 1 1/16" x RL (8-16')
PIN	



STOCK CODE	DIMENSIONS
1382368	1 1/16" x 1 1/16" x 16'
PFJ	
168P.76 (1682398)	1 1/16" x 1 1/16" x 16'
LVL	
103 (1382357)	1-1/16" x 1-1/16" x 16'
PIN	



STOCK CODE	DIMENSIONS
C 108 (1394174)	1/2" x 1/2" x 16'
PIN	



STOCK CODE	DIMENSIONS
C 1693391	1 1/16" x 1-3/8" x 16'
PFJ	

SHINGLE/PANEL MOULDING

Shingle mould, also known as rake mould is traditionally used on the rake of a building or around exterior window frames. May also be used in applications similar to panel moulds.



STOCK CODE
210P
(1382653)

DIMENSIONS
1 1/16" x 1-5/8" x 16'

PFJ



STOCK CODE
212P
(1394374)

DIMENSIONS
1 1/16" x 2-1/2" x 16'

PFJ

SQUARE

Squares are primarily utilitarian mouldings used in the framing of shelves and cabinets, or are used to build up other profiles.



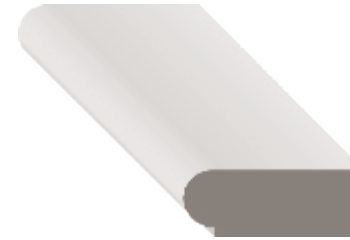
STOCK CODE
239PF16
(1394384)

DIMENSIONS
3/4" x 3/4" x 97"

PFJ

FILLET

Fillet or bull nose is typically used in the build up of an architrave, or as a transition between other mouldings



STOCK CODE
953P
(1394647)

DIMENSIONS
7/16" x 1-1/8" x 16'

PFJ



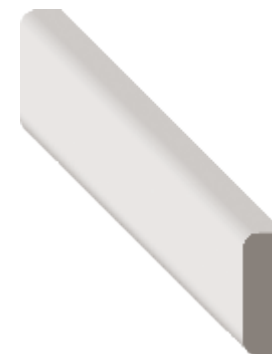
STOCK CODE
150P
(1394274)

DIMENSIONS
1/2" x 1-1/2" x 16'

PFJ

SHELF EDGE/SCREEN MOULD

A very versatile profile; screen mould fits a wide variety of needs and uses. Screen mouldings are traditionally used to hold mesh screening into wood screens, they also work well as edge trim on various shelving or wood trim for wallpaper.



STOCK CODE
142
(1415968)

DIMENSIONS
1/4" x 3/4" x RL (8-16')

PIN



STOCK CODE
137P
(1394247)

DIMENSIONS
1/2" x 1-1/4" x 16'

PFJ

SHIPLAP

In interior design, shiplap is a style of wall siding characterized by long planks. They are mounted horizontally or vertically with a slight gap between.



STOCK CODE	DIMENSIONS
1687158	$1\frac{7}{32}'' \times 5\text{-}\frac{3}{8}'' \times 16'$
1687159	$1\frac{7}{32}'' \times 7\text{-}\frac{3}{8}'' \times 16'$

PFJ



STOCK CODE	DIMENSIONS
1678737	$\frac{1}{2}'' \times 7\text{-}\frac{1}{4}'' \times 16'$

MDF/UL



STOCK CODE	DIMENSIONS
1683077	$\frac{1}{2}'' \times 5\text{-}\frac{1}{4}'' \times 16'$

MDF/UL

WAINSCOT

Tongue and Groove paneling is often used in a wainscot application to decorate or cover a wall. The boards fit together edge to edge using a slot and ridge on the opposite edge.



STOCK CODE	DIMENSIONS
1676082	$1\frac{1}{16}'' \times 7\text{-}\frac{1}{4}'' \times 16'$

MDF/UL



STOCK CODE	DIMENSIONS
A 1676081	$1\frac{1}{16}'' \times 5\text{-}\frac{1}{4}'' \times 16'$

MDF/UL



STOCK CODE	DIMENSIONS
A 16YP2VJREV (1394324)	$1\frac{1}{16}'' \times 5\text{-}\frac{7}{16}'' \times 16\text{-}\frac{11}{16}''$

PIN

MISCELLANEOUS

WAINSCOT/PLYCAP

Plycaps are used to enhance existing or new moulding by slipping over paneling edge to create a transition point or a simple chair rail.



STOCK CODE	DIMENSIONS	
A 1219 (1394229)	1 1/16" x 1-5/8" x RL (8-16')	PIN

INDEX

STOCK CODE	PROFILETYPE	DIMENSIONS	SPECIES	PAGE
1382368	QUARTER ROUND	1 1/16" x 1 1/16" x 16'	PFJ	59
1382479	BASE SHOE	7/16" x 1 1/16" x 16'	PFJ	17
1382734	FLATSTOCK	2 3/32" x 3-1/2" x 16'	PFJ	47
1382811	CASING	1 1/16" x 3-1/2" x 16'	PFJ	21
1382822	BASEBOARD	9/16" x 3-1/2" x 16'	PFJ	14
1382857	CASING	1 1/16" x 2-1/2" x 16'	PFJ	20
1382988	BASEBOARD	1/2" x 5-1/2" x 16'	MDF/UL	10
1382989	BASEBOARD	9/16" x 5-1/2" x 16'	PFJ	10
1393458	BASEBOARD	9/16" x 5-1/2" x 16'	PFJ	15
1394446	CASING	1 1/16" x 3-1/2" x 17"	PFJ	29
1415927	FLATSTOCK	1 1/16" x 11-1/2" x 18"	MDF/UL	47
1416125	CHAIR RAIL	1" x 3-7/16" x 16'	PFJ	33
1416207	CASING	1-1/16" x 3-1/2" x 102"	PFJ	28
1416328	FLATSTOCK	9/16" x 5-1/2" x 16'	PFJ	47
1461743	COVE	1 1/16" x 1 1/16" x 16'	PFJ	57
1462044	FLATSTOCK	1/2" x 3/4" x 16'	PFJ	47
1462168	BASEBOARD	9/16" x 4-1/4" x 16'	PFJ	14
1484904	FLATSTOCK	1" x 3-1/2" x 16'	MDF/UL	47
1484991	CASING	1" x 3-1/4" x 16'	MDF/UL	19
1521266	BASE SHOE	1/2" x 3/4" x 16'	PFJ	17
1521912	BASEBOARD	1/2" x 4-1/4" x 16'	MDF/UL	14
1577740	FLATSTOCK	9/16" x 3-1/2" x 17"	PFJ	47
1577743	FLATSTOCK	2 1/32" x 3-1/2" x 102"	PFJ	47
1577819	STOOL	1 1/16" x 7-1/2" x 16'	FJR	52
1626223	BASEBOARD	1/2" x 6" x 16'	MDF/UL	11
1674183	BACK BAND	1 1/16" x 1-1/16" x 17"	FJR	7
1674680	BACK BAND	1-3/16" x 1-9/16" x 17"	FJR	7
1674704	BASEBOARD	1 9/32" x 7-1/4" x 16'	MDF/UL	12
1676052	BASEBOARD	1 9/32" x 5-1/2" x 16'	PFJ	12
1676081	WAINSCOT	1 1/16" x 5-1/2" x 16'	MDF/UL	63
1676082	WAINSCOT	1 1/16" x 7-1/2" x 16'	MDF/UL	63
1676813	STOP	7/16" x 1-3/8" x 96"	PFJ	45
1677449	BASEBOARD	1/2" x 5" x 16'	MDF/UL	11
1677899	FLATSTOCK	2 1/32" x 3-1/2" x 90"	PFJ	47
1677969	ARCHITRAVE	1-1/2" x 5-1/2" x 16'	MDF/UL	6
1677973	CASING	5/8" x 3-1/2" x 17"	MDF/UL	26
1678003	FLATSTOCK	1 1/16" x 2-1/2" x 16'	MDF/UL	47
1678737	SHIPLAP	1/2" x 7-1/4" x 16'	MDF/UL	62
1678975	CASING	2 9/32" x 3-7/32" x 103"	PFJ	27
1680231	BASEBOARD	9/16" x 5-1/2" x 16'	PFJ	13
1680232	BASEBOARD	9/16" x 7-1/4" x 16'	PFJ	13
1680590	CROWN	2 1/32" x 4-1/4" x 16'	MDF/UL	40
1680633	CASING	1-1/16" x 3-11/16" x 17"	PFJ	26
1680727	FLATSTOCK	2 3/32" x 1-1/2" x 16'	PFJ	47
1681158	FLATSTOCK	1 1/16" x 3-1/2" x 88"	MDF/UL	47
1681669	BASEBOARD	1/2" x 7-1/2" x 16'	MDF/UL	10
1682686	FLATSTOCK	2 1/32" x 3-1/2" x 88"	PFJ	47
1682984	CASING	3/4" x 3-1/2" x 17"	MDF/UL	26
1683077	SHIPLAP	1/2" x 5-1/4" x 16'	MDF/UL	62
1683696	CASING	1 1/16" x 3-1/2" x 17"	PFJ	26
1684003	BACK BAND	1 1/16" x 1-1/16" x 16'	PFJ	7
1685883	STOP	3/8" x 1-1/2" x 17"	PFJ	45
1686517	FLATSTOCK	2 1/32" x 3-1/2" x 97-1/4"	PFJ	47
1686536	JAMB	1 1/16" x 6-9/16" x 81-11/16"	FJR	48
1686891	BACK BAND	1 1/16" x 1-1/16" x 17"	PFJ	7
1686930	STOP	3/8" x 1-1/4" x 85"	PIN	45
1687158	SHIPLAP	1 1/32" x 5-3/8" x 16'	PFJ	62
1687159	SHIPLAP	1 1/32" x 7-3/8" x 16'	PFJ	62
1688812	STOP	3/8" x 1-1/4" x 81"	PFJ	45
1688854	FLATSTOCK	2 3/32" x 2-1/2" x 17"	PFJ	47
1688865	FLATSTOCK	2 3/32" x 3-1/2" x 17"	PFJ	47
1689641	FLATSTOCK	1 1/16" x 3-1/2" x 81-1/2"	MDF/UL	47
1690426	CASING	5/8" x 2-1/2" x 85"	MDF/UL	21
1692569	BASEBOARD	9/16" x 7-1/4" x 16'	PFJ	13
1692570	CASING	1 1/16" x 2-3/4" x 17"	PFJ	25
1692571	CASING	1 1/16" x 3-1/2" x 17"	PFJ	25
1692572	CHAIR RAIL	9/16" x 3" x 16'	PFJ	33
1692573	PANEL MOULD	1 1/32" x 1-1/4" x 16'	PFJ	51

STOCK CODE	PROFILETYPE	DIMENSIONS	SPECIES	PAGE
1692574	BASEBOARD	9/16" x 4-1/2" x 16'	PFJ	12
1692575	CASING	1 1/16" x 2-3/4" x 17"	PFJ	20
1692576	BASEBOARD	9/16" x 5-1/2" x 16'	PFJ	12
1692577	CASING	1 1/16" x 3-1/2" x 17"	PFJ	20
1692578	PANEL MOULD	5/8" x 2" x 16'	PFJ	51
1693026	CASING	1 1/16" x 3-1/2" x 84-13/16"	PFJ	21
1693027	CASING	1 1/16" x 2-1/2" x 83-3/4"	PFJ	20
1693028	CASING	1 1/16" x 2-1/4" x 83-1/2"	PFJ	24
1693391	QUARTER ROUND	1 1/16" x 1-3/4" x 16'	PFJ	59
1693396	CASING	5/8" x 2-1/4" x 83-1/2"	PFJ	21
1693415	FLATSTOCK	9/16" x 3-1/2" x 87"	PFJ	47
1693735	CASING	1 1/16" x 3-1/2" x 17"	PFJ	27
1693736	CASING	1 1/16" x 3-1/2" x 87"	PFJ	27
1694007	CASING	5/8" x 3-1/2" x 16'	MDF/UL	21
1694165	CASING	1 1/16" x 3-1/2" x 102"	PFJ	22
1694175	CASING	1-1/16" x 3-3/4" x 17"	PFJ	28
1694177	CASING	1-1/16" x 3-3/4" x 88"	PFJ	28
1694178	BASE SHOE	1/2" x 3/4" x 16'	PFJ	17
1694850	CASING	1-1/16" x 3-1/2" x 17"	PFJ	28
1694958	STOP	3/8" x 1-1/2" x 97"	PFJ	45
1695312	JAMB	1-7/32" x 4-9/16" x 81-19/16"	PFJ	48
1695313	JAMB	1-7/32" x 4-9/16" x 98"	PFJ	48
1695324	JAMB	1-7/32" x 6-9/16" x 81-3/4"	PFJ	48
1695325	JAMB	1-7/32" x 6-9/16" x 98"	PFJ	48
1695722	CASING	1-1/16" x 2-3/4" x 17"	PFJ	22
1696126	HAND RAIL	1-1/16" x 2-1/4" x 18'	PIN	58
1696147	JAMB	1-1/16" x 6-7/16" x 97-11/16"	FJR	48
1696175	STOP	3/8" x 1-1/4" x RL (8-16')	PIN	45
1696187	BRICK MOULD	1-1/4" x 2" x 83-1/4"	PVC	55
1696191	BRICK MOULD	1-1/4" x 2" x 40"	PVC	55
1696641	JAMB	1-3/16" x 6-9/16" x 81-11/16"	PFJ	48
1696703	CASING	1-1/32" x 2-23/32" x 17"	PFJ	23
1697002	FLATSTOCK	2 1/32" x 2-1/2" x 17"	PFJ	47
1697003	FLATSTOCK	2 1/32" x 2-1/2" x 85"	PFJ	47
1697621	JAMB	1" x 4-9/16" x 81-11/16"	PFJ	48
1697622	JAMB	1" x 4-9/16" x 81-11/16"	PFJ	48
02P (1394149)	PANEL MOULD	1 1/16" x 2-7/16" x 16'	PFJ	51
05M (1394150)	PANEL MOULD	9/16" x 1-9/16" x 16'	MDF/UL	51
100 (1394151)	COVE	1 1/16" x 1 1/16" x RL (8-16')	PIN	57
100F08 (1382341)	COVE	1 1/16" x 1 1/16" x 8'	PIN	57
100F16 (1394153)	COVE	1 1/16" x 1 1/16" x 16'	PIN	57
1000 (1626643)	COVE	1 1/16" x 1 1/16" x RL (1-16')	O	57
101 (1484114)	COVE	1/2" x 1/2" x RL (8-16')	PIN	57
1021FJ (1567235)	STOOL	1 1/16" x 5-1/2" x 16'	FJR	52
1021M (1382351)	STOOL	9/16" x 5-1/2" x 16'	MDF/UL	52
1021P (1577734)	STOOL	1 1/16" x 5-1/2" x 16'	PFJ	52
1021WM (1394161)	STOOL	1 1/16" x 7-1/2" x 16'	MDF/UL	52
1021WP (1577736)	STOOL	1 1/16" x 7-1/2" x 16'	PFJ	52
1022BNP (1394164)	STOOL	1 1/16" x 1-9/8" x 16'	PFJ	53
1022M (1382355)	STOOL	9/16" x 4-1/2" x 16'	MDF/UL	52
103 (1382357)	QUARTER ROUND	1-1/16" x 1-1/16" x 16'	PIN	59
105 (1382360)	QUARTER ROUND	3/4" x 3/4" x RL (8-16')	PIN	59
1050 (1394169)	QUARTER ROUND	3/4" x 3/4" x RL (1-16')	O	59
106 (1461763)	QUARTER ROUND	1 1/16" x 1 1/16" x RL (8-16')	PIN	59
108 (1394174)	QUARTER ROUND	1/2" x 1/2" x 16'	PIN	59
110S4SM (1521204)	FLATSTOCK	1 1/16" x 9-1/4" x 16'	MDF/UL	47
110S4SMR (1394183)	FLATSTOCK	3/4" x 9-1/4" x 16'	RMDF	47
110S4SP1 (1394185)	FLATSTOCK	2 1/32" x 9-1/4" x 16'	PFJ	47
112S4SM (1484204)	FLATSTOCK	1 1/16" x 11-1/4" x 16'	MDF/UL	47
112S4SMR (1394204)	FLATSTOCK	3/4" x 11-1/4" x 16'	RMDF	47
112S4SP1 (1382427)	FLATSTOCK	2 1/32" x 11-1/4" x 16'	PFJ	47
1163P (1382440)	STOOL	1-1/16" x 3-1/4" x 16'	PFJ	53
1164P (1382443)	STOOL	1-1/16" x 2-3/4" x 16'	PFJ	53
116S4SMR (1673320)	FLATSTOCK	3/4" x 15-1/2" x 16'	RMDF	47
1195FJ (1394225)	STOOL	1 1/16" x 2-7/16" x 16'	FJR	53
1195P (1394226)	STOOL	1 1/16" x 2-7/16" x 16'	PFJ	53
1217 (1394228)	PANEL MOULD	1/2" x 1-7/16" x RL (8-16')	PIN	50
1219 (1394229)	WAINSCOT/PLYCAP	1 1/16" x 1-5/8" x RL (8-16')	PIN	64

Lined writing area for page 68, consisting of 26 horizontal lines.

Lined writing area for page 69, consisting of 26 horizontal lines.



METRIE.

METRIE® IS NORTH AMERICA'S LEADING MANUFACTURER AND DISTRIBUTOR OF INTERIOR MOULDINGS.

Metrie has the broad reach and supply chain expertise of an industry leader with the personal touch of a family business. We're committed to delivering tailored solutions that make it easier to transform houses into homes.



METRIE PRODUCTS DISTRIBUTED BY:

METRIE.COM



STOCKED IN
ATLANTA ONLY

40 Hopson Road SE
Acworth, GA 30102

T: 770.975.0223
F: 770.975.9786



STOCKED IN
CHARLOTTE ONLY

11445 Granite Street, Suite C
Charlotte, NC 28273

T: 704.504.9880
F: 704.504.5794