



For the Name and Products You Can Trust!





3750 Multi Slide System

Features and Benefits

■ Sizing

- Standard sizing in 9', 12', and 15' x 8' in 3 panel Configuration.
- Standard sizing in 12', 16', and 20' x 8' in 4 panel Configuration.
- Maximum panel size is 5' x 8' or 40 sq ft.
- Maximum frame width of 3 panel door system at 15'.
- Maximum width of 4 panel door system at 20'.
- Custom sizing available.

■ Frame

- KD or welded main frame.
- 7 $\frac{3}{4}$ " total width 6 $\frac{3}{4}$ " jamb depth all PVC multi-chambered profile frame system (on 3 panel).
- 10 $\frac{3}{16}$ " total width 9 $\frac{3}{16}$ " jamb depth all PVC multi-chambered profile frame system (on 4 panel).
- Integrated nail fin application with 1" or 1 $\frac{3}{8}$ " set back.
- Full length weather stripping on all 4 frame components.
- Integrated sill drainage with snap-in sill covers.

■ Sash

- Fully welded vinyl sash with internal aluminum reinforcement with $\frac{7}{8}$ " standard IG, or a 1 $\frac{1}{4}$ " triple insulated glass system.
- Many high energy-efficient glass options for the most extreme temperature sensitive regions.
- Standard glazing, Cardinal™ LoE 366® dual glazed tempered glass.
- All stiles are metal reinforced for extreme wind load resistance.
- Unique internal drainage system to minimize risk of seal failures.
- Interior glazed for better performance.

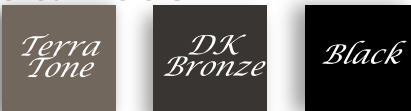
■ Hardware

- Truth Nexus 2 point lock with opposing lock points.
- Anti-lock feature preventing a "false" sense of lock up.
- Flush mount handle - does not protrude into the room.
- Deep finger pocket - provides superior grip area for moving large door panels.
- Recessed thumb slide intuitive locking and unlocking of panel.
- Stainless steel roller housing and composite wheels with side adjustment, AAMA rated to carry a 500 pound panel for 10,000 cycles without change to adjustment.
- Hardware colors; white, black powder coat, and brushed chrome.

■ Extruded Vinyl Colors



■ Optional Exterior Coated Stocked Colors



■ Optional

- Black Interior and Exterior Specialty Laminate

Featuring **WINSHIELD**



Signature

Flush Mount



3750 Sliding Door System

Features and Benefits

Frame

- 5 ¹⁵/₁₆" KD or welded main frame with integral pre-punched nailing flange with either a 1" or 1 ³/₈" set back.
- Sloped aluminum anodized threshold cover.
- Integrated screen channel in the frame with aluminum screen track for ease of operation and long term durability.
- Anodized aluminum track.

Sash

- Fully welded 3 ³/₄" x 1 ¹/₄" vinyl sash with internal aluminum reinforcement.
- Standard ⁷/₈" IG, or a 1 ¹/₄" triple insulated glass system.
- Many high energy-efficient glass options for the most extreme temperature sensitive regions.
- Standard glazing, Cardinal™ LoE 366® dual glazed tempered glass with warm-edge spacer system.
- All stiles are metal reinforced for extreme wind load resistance.
- Unique internal drainage system to minimize risk of seal failures.
- Interior glazed for better performance.
- Stainless steel roller housing and composite wheels with side adjustment, AAMA rated to carry a 500 lb panel for 10,000 cycles without change to adjustment.
- Truth's Anti-Slam and double point lock. Meets the most stringent forced entry resistance testing.

Hardware

Hardware colors; white, beige, black powder coat, and brushed chrome.

Extruded Vinyl Colors



Optional Exterior Coated Stocked Colors



Optional

- Black Interior and Exterior Specialty Laminate

Featuring **WINSHIELD**



Standard



Signature optional upgrade



Flush Mount optional upgrade





2750 Multi Slide System

Features and Benefits

■ Sizing

- Standard sizing in 9' x 8' and 12' x 8' in 3 panel configuration.
- Standard sizing in 12' x 8' and 16' x 8' in 4 panel configuration.
- Maximum panel size is 4' x 8'.
- Maximum frame width of 3 panel door system at 12'.
- Maximum width of 4 panel door system at 16'.
- Custom sizing available.

■ Frame

- KD or welded main frame.
- 7 $\frac{3}{4}$ " total width 6 $\frac{3}{4}$ " jamb depth all PVC multi-chambered profile frame system (on 3 panel).
- 10 $\frac{3}{16}$ " total width 9 $\frac{3}{16}$ " jamb depth all PVC multi-chambered profile frame system (on 4 panel).
- Integrated nail fin application with 1" or 1 $\frac{3}{8}$ " set back.
- Full length weather stripping on all 4 frame components.
- Integrated sill drainage with snap-in sill covers.

■ Sash

- Fully welded vinyl sash with internal aluminum reinforcement with $\frac{7}{8}$ " standard IG, or a 1 $\frac{1}{4}$ " triple insulated glass system.
- Many high energy-efficient glass options for the most extreme temperature sensitive regions.
- Standard glazing, Cardinal™ LoE 366® dual glazed tempered glass.
- All stiles are metal reinforced for extreme wind load resistance.
- Unique internal drainage system to minimize risk of seal failures interior glazed for better performance.

■ Hardware

- Truth Nexus 2 point lock with opposing lock points.
- Anti-lock feature preventing a "false" sense of lock up.
- Flush mount handle - does not protrude into the room.
- Deep finger pocket - provides superior grip area for moving large door panels.
- Recessed thumb slide intuitive locking and unlocking of panel.
- Stainless steel roller housing and composite wheel with end adjustment, AAMA rated to carry a 500 pound panel for 10,000 cycles without change to adjustment.
- Hardware colors; white, beige, black powder coat, and brushed chrome.

■ Extruded Vinyl Colors



■ Optional Exterior Coated Stocked Colors



Standard



Signature optional upgrade



2750 Sliding Door System

Features and Benefits

Frame

- 5 1/8" welded main frame with integral pre-punched nailing flange with either a 1" or 1 1/8" set back.
- Sloped aluminum anodized threshold cover.
- Integrated screen channel in the frame with aluminum screen track for ease of operation and long term durability.
- Anodized aluminum track.

Sash

- Fully welded 2 3/4"x 1 3/4" vinyl sash with internal aluminum reinforcement.
- Standard 3/8" IG, or a 1 1/4" triple insulated glass system.
- Many high energy-efficient glass options for the most extreme temperature sensitive regions.
- Standard glazing, Cardinal™ LoE 366® dual glazed tempered glass with warm-edge spacer system.
- All stiles are metal reinforced for extreme wind load resistance.
- Unique internal drainage system to minimize risk of seal failures.
- Interior glazed for better performance.
- Stainless steel roller housing and composite wheels with side adjustment, AAMA rated to carry a 500 lb panel for 10,000 cycles without change to adjustment.
- Truth's Anti-Slam and double point lock. Meets the most stringent forced entry resistance testing.

Extruded Vinyl Colors



Optional Exterior Coated Stocked Colors



Hardware

Hardware colors; white, beige, black powder coat, and brushed chrome



Standard

Signature optional upgrade





3750 Swing Door System

Features and Benefits

- Welded vinyl main frame with internal aluminum reinforcement with the option of a 1" or a 1 3/8" nailing flange.
- Foam backed weather seal on main frame.
- Contemporary style vinyl sash with internal aluminum reinforcement.
- Welded sash corners.
- Adjustable contemporary European hinges.
- Stainless multipoint locking hardware on both active and inactive sash.
- Bronze and commercial clear anodized aluminum sill covers inside and outside.

■ Sizes

- New Construction / Replacement.
- Custom applications.

■ Glass Options

- Cardinal™ LoE 366® Dual Glazed tempered glass.
- Edgetech® warm-edge spacer system.
- Clear, obscure, and custom glass is available.

■ Grids

- SDL (Simulated Divided Lite).
- GBG (Grids Between Glass).

■ Hardware

- Hardware Colors; White, Black powder coat, and Brushed Chrome.

■ Extruded Vinyl Colors



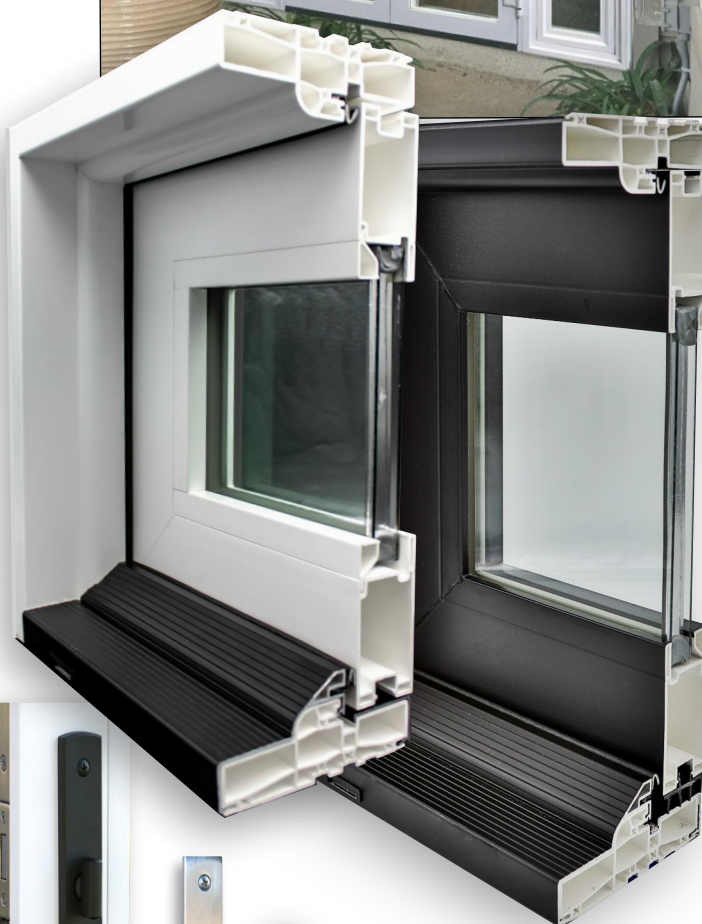
■ Optional Exterior Coated Stocked Colors



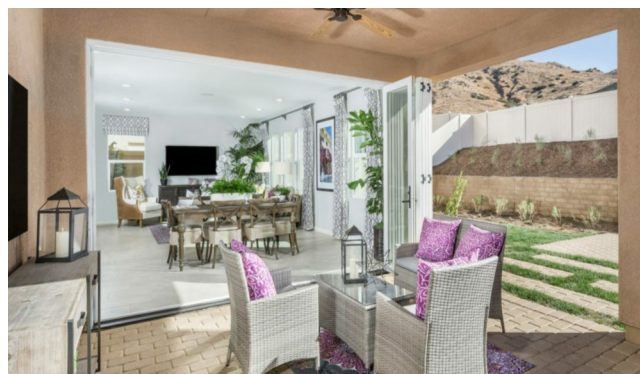
■ Optional

- Black Interior and Exterior Specialty Laminate

Featuring **WINSHIELD**



Sentry™ Multi-point lock



Centor® Architectural E3 Hardware

3750 Folding Door System



Features and Benefits

- Vinyl Frame with aluminum reinforcement.
- Foam backed seal on main frame.
- Contemporary style vinyl sash with internal aluminum reinforcement.
- Welded sash corners.
- Dual interlocking weather seal on sash for superior air and thermal performance.
- Centor Architecture™ E3 hardware system.
- Stainless multipoint locking hardware.

■ Sizes

- New construction / replacement.
- Custom applications.

■ Glass Options

- Cardinal™ LoE 366® dual glazed tempered glass.
- Warm-edge spacer system.
- Clear, obscure, and custom glass is available.

■ Grid Options

- SDL (Simulated Divided Lite).
- GBG (Grids Between Glass).

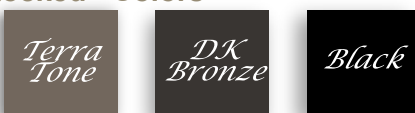
■ Hardware Options

- Hardware colors; white, black powder coat, and brushed chrome.

■ Extruded Vinyl Colors



■ Optional Exterior Coated Stocked Colors



■ Optional

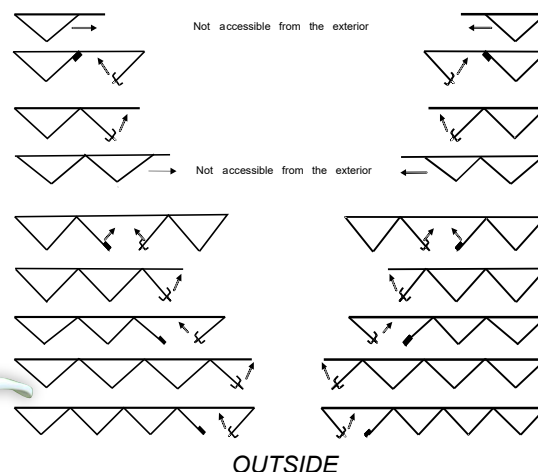
- Black Interior and Exterior Specialty Laminate

Featuring **WINSHIELD**

Jet Black



Example of folding door configuration



Sentry™ Multi-point lock



2750 and 3750 Folding Window System



Features and Benefits

- Vinyl frame with aluminum.
- Foam backed seal on main frame.
- Contemporary style vinyl sash.
- Welded sash corners.
- Dual interlocking weather seal on sash for superior air and thermal performance.
- Centor™ E3 hardware system in stainless and black powder coat finish.
- Stainless multipoint locking hardware Internal multipoint shoot bolt system.

■ Glass Options

- Cardinal™ 366® LoE dual glaze with warm edge spacer system.
- Clear, obscure, and custom glass is available.

■ Hardware

- Hardware colors; white, black powder coat, and brushed chrome.

■ Grids

- SDL (Simulated Divided Lite).
- GBG (Grids Between Glass).

■ Sizes

- New construction / replacement custom applications.

■ Extruded Vinyl Colors

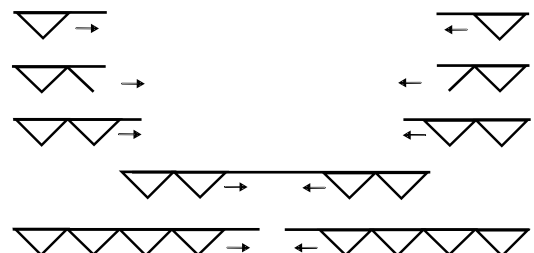


■ Optional Exterior Coated Stocked Colors



■ Optional

- 3750 Black Interior and Exterior Specialty Laminate Featuring **WINSHIELD**



Drawings show out-swing operation



*Allow yourself to bring the outdoors in or the indoors out.
For new construction, replacement, and new add-on.*



WinDor is a proud member of the following



The National
Fenestration
Rating
Council



American
Architectural
Manufacturer
Association

www.windorsystems.com

20200401