

3750 Black Foil Systems

featuring

WINSHIELD



Multi-Slide Doors, Sliding Patio Doors, Folding Windows, Folding Doors, and Swing Doors



For the Name and Products You Can Trust!

WINDOR®

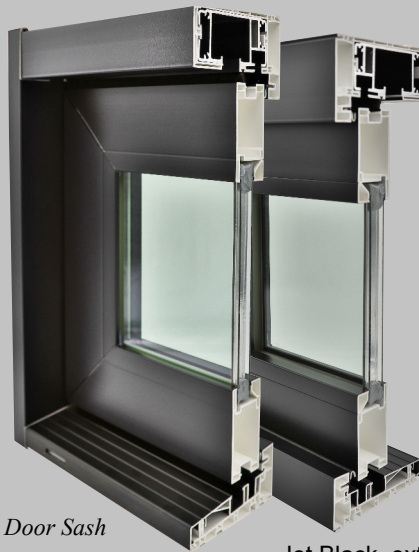
3750 Door Systems featuring **WINSHIELD**

A weather and fade resistant exterior and interior foil.

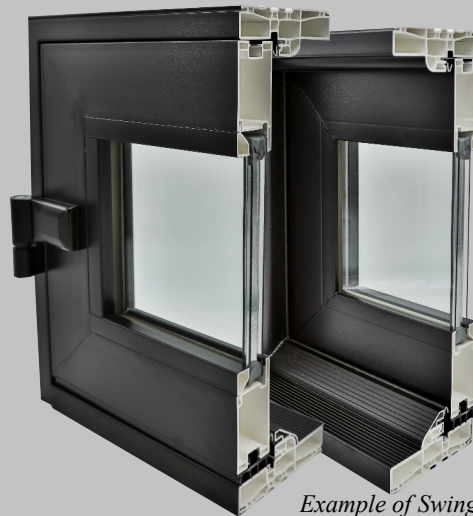


What is foil laminate?

*WinShield® utilizes a multi layer construction, the top layer being a transparent high grade weather resistant PMMA (Polymethyl methacrylate) overlay with a thickness > 2 1/3 mil. This PMMA overlay laminate ensures to a vast extent the extraordinary weathering resistance (Heat) and color stability of a laminate. The construction is followed with a pigmented vinyl center layer, which has IR reflective pigments, a patented technology. The final layer of the laminate is a highly full IR reflective vinyl bottom layer laminate. **The three layers together result in a final thickness of the laminate between 9 - 10 mils.***



Example of Folding Door Sash and Frame



Example of Swing Door Sash and Frame

Jet Black, exterior and interior

3750 Foiled Products

Multi-Slide Doors, Sliding Patio doors, Folding Windows, Folding Doors, and Swing Doors



Win-Dor is a proud member of the following



The National
Fenestration Rating
Council



American Architectural
Manufacturer
Association

www.windorsystems.com